





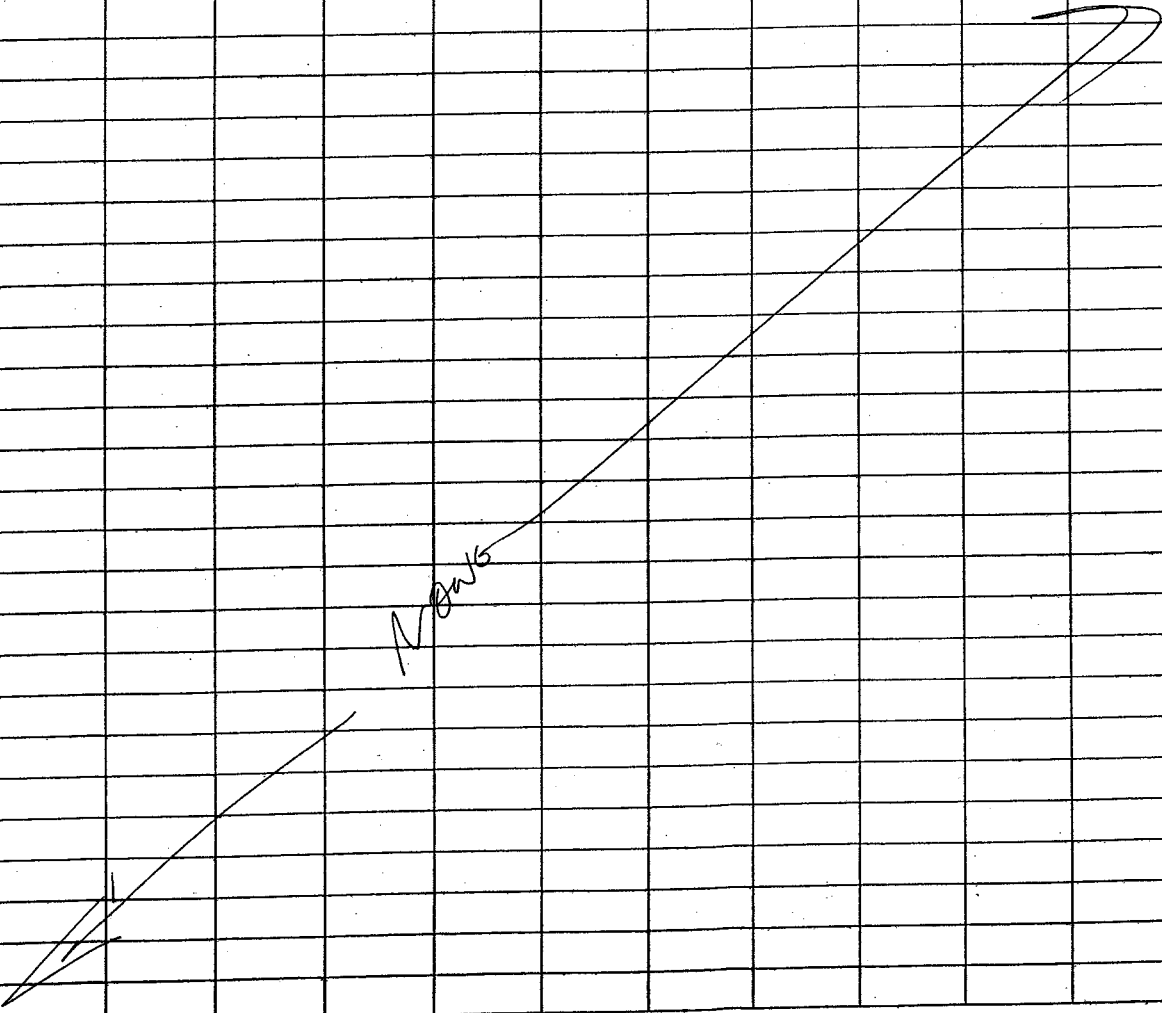
Cruise: <i>EDDIES</i>		Leg: <i>Transect EDT4</i>		Cast: <i>C10#3</i>		Type: <i>0-700m Pits Array 4' Deployment @ 2070</i>		Samplers: <i>X0508C3.DAT</i>									
Date: <i>19-Aug-05</i>	Time: <i>1105</i>	Lat: <i>30° 10.883 N</i>	Long: <i>68° 34.443 W</i>	None.													
Date: <i>19-Aug-05</i>	Time: <i>1146</i>	Lat: <i>30° 11.044 N</i>	Long: <i>68° 34.620 W</i>														
N #	depth	Niskin temp	Oxygens			DIC	DIC	DOC	DON	Salts	Nut1	Nut2	Bact.	POC PON Vol=	PSI Vol=	HPLC Vol=	BBOP Chla
			O2 1	O2 2	O2 3												
1																	
2																	
3																	
4																	
5																	
6																	
7																	
8																	
9																	
10																	
11																	
12																	
13																	
14																	
15																	
16																	
17																	
18																	
19																	
20																	
21																	
22																	
23																	
24																	

*3 BOTTLES*

*NO*

*A*

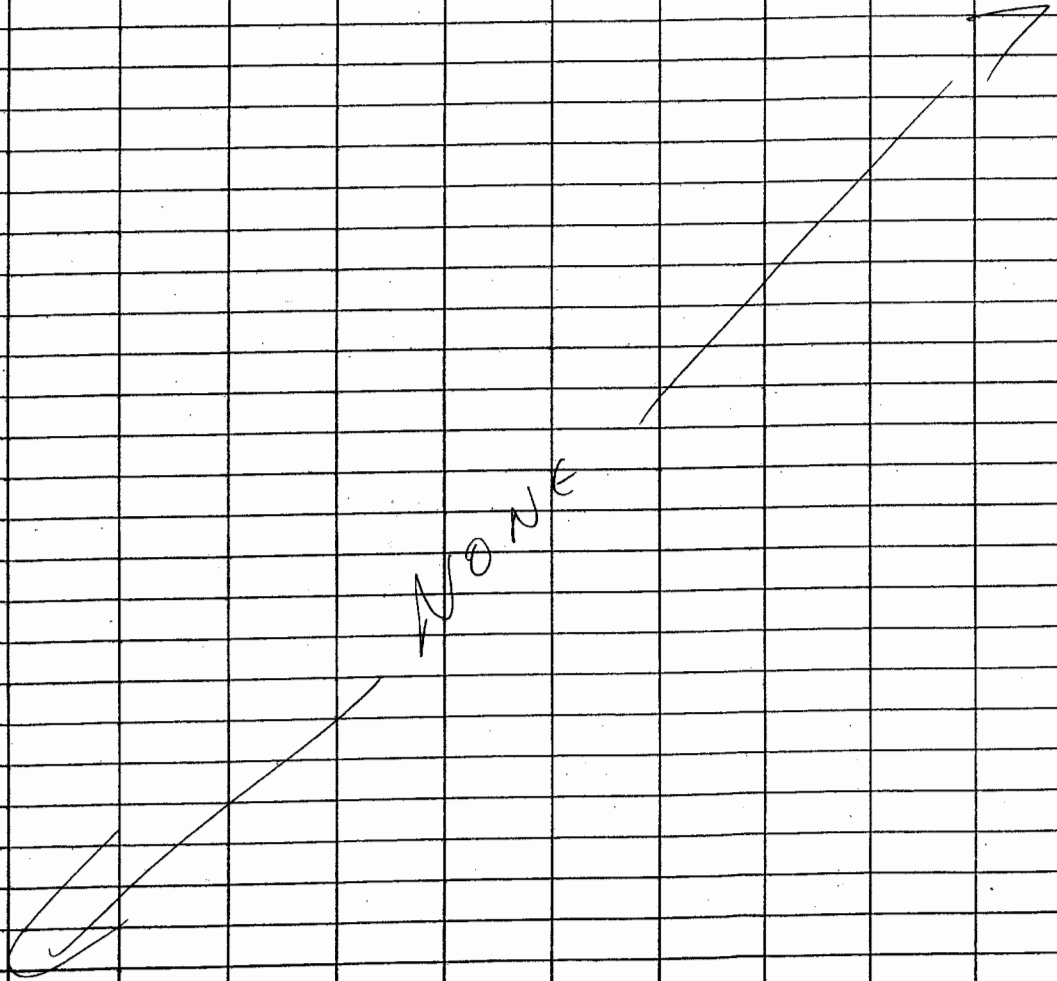
Cruise: EDDIES			Leg: TRANSECT 3 - E073			Cast: CTD#4			Type: 0-1200m 10km S, 10km W of 2070. X050804-DA7								
Date: 19-Aug-2005			Time: 1258			Lat: 30° 05' 49.2N			Long: 68° 40' 88.0W			Samplers: NONE					
Date: 19-Aug-2005			Time: 1356			Lat: 30° 05' 44.0N			Long: 68° 40' 85.5W								
N #	depth	Niskin temp	Oxygens			DIC	DIC	DOC	DON	Salts	Nut1	Nut2	Bact.	POC PON Vol=	PSI Vol=	HPLC Vol=	BBOP Chla
			O2 1	O2 2	O2 3												
1																	
2																	
3																	
4																	
5																	
6																	
7																	
8																	
9																	
10																	
11																	
12																	
13																	
14																	
15																	
16																	
17																	
18																	
19																	
20																	
21																	
22																	
23																	
24																	





Cruise		Leg		Cast		Type		Station									
E002ES		TRANSECT#4		C1046.X0508C6.01		O-1200		2069. 11B3									
Date		Time		Lat		Long		Samplers									
19-AUG-05		18:01		30° 11.101N		68° 46.947W		None									
Date		Time		Lat		Long		Samplers									
19-AUG-05		18:59		30° 11.190N		68° 47.061W		None									
N #	depth	Niskin temp	Oxygens			DIC	DIC	DOC	DON	Salts	Nut1	Nut2	Bact.	POC PON Vol=	PSI Vol=	HPLC Vol=	BBOP Chla
			O21	O22	O23												
1																	
2																	
3																	
4																	
5																	
6																	
7																	
8																	
9																	
10																	
11																	
12																	
13																	
14																	
15																	
16																	
17																	
18																	
19																	
20																	
21																	
22																	
23																	
24																	

NONE

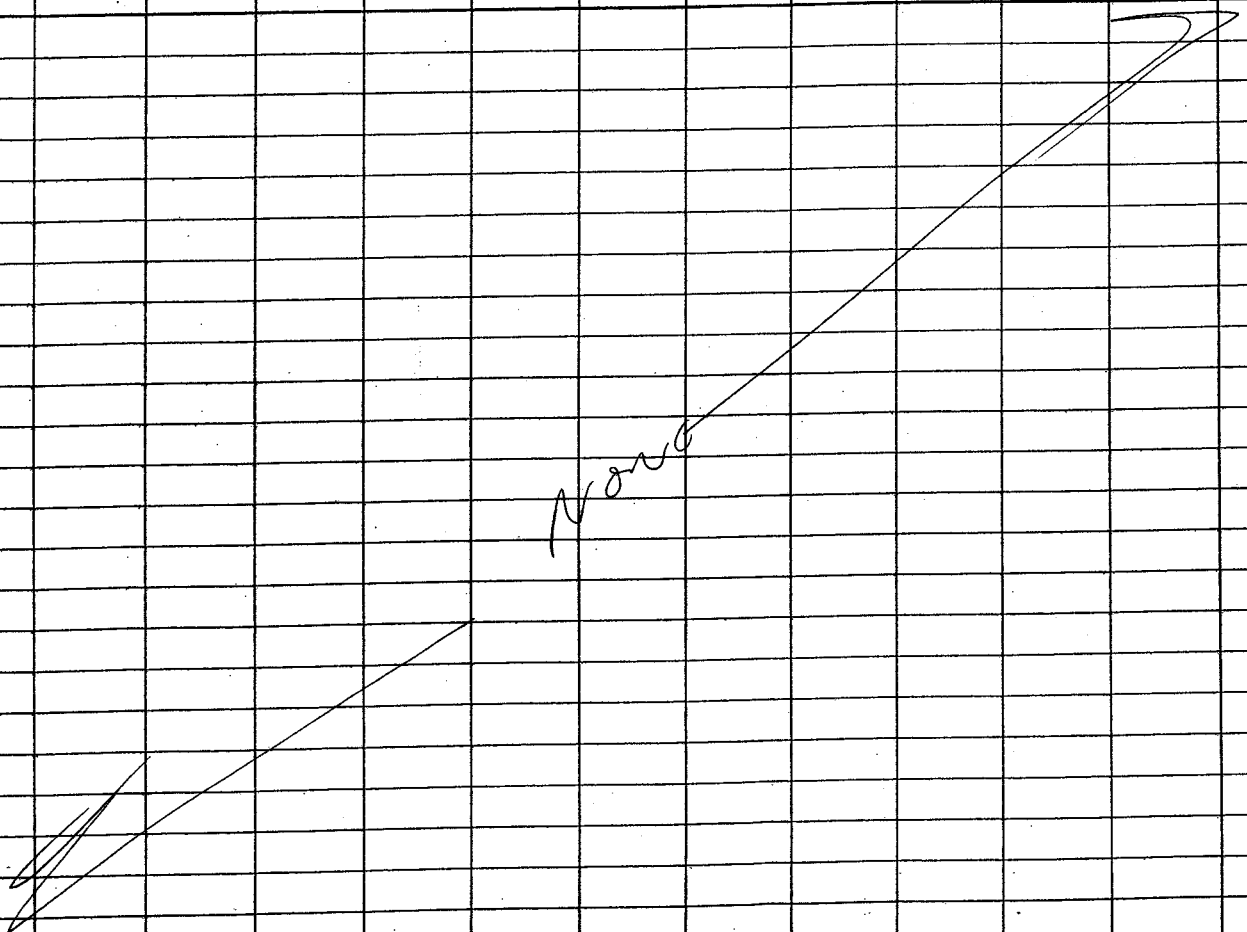


Cruise: <i>ED125</i>		Leg: <i>TRANSIT 4 EDTU</i>		Cast: <i>CTD 07 X05067.07A</i>		Type: <i>0 - 200m Profile @ inside front 2069-2069.5</i>		Samplers: <i>NONE</i> <span style="float: right;"><i>NB10</i></span>									
Date: <i>19-AUG-05</i>		Time: <i>1942</i>		Lat: <i>30° 11.115 N</i>		Long: <i>68° 43.343 W</i>											
Date: <i>19-AUG-05</i>		Time: <i>1959</i>		Lat: <i>30° 11.186 N</i>		Long: <i>68° 43.237 W</i>											
N #	depth	Niskin temp	Oxygens			DIC	DIC	DOC	DON	Salts	Nut1	Nut2	Bact.	POC PON Vol=	PSI Vol=	HPLC Vol=	BBOP Chla
			O21	O22	O23												
1																	
2																	
3																	
4																	
5																	
6																	
7																	
8																	
9																	
10																	
11																	
12																	
13																	
14																	
15																	
16																	
17																	
18																	
19																	
20																	
21																	
22																	
23																	
24																	

NONE

Cruise: <i>EMZES</i>		Leg: <i>TRANSECT 4 EDI4</i>		Cast: <i>CTD#8 X850PCS-02</i>		Type: <i>0-200m Confirmat of Hgl 4 @ 2069.5 NB(9)</i>		Samplers: <i>NONE</i>									
Date: <i>19-AUG-08</i>		Time: <i>20 35</i>		Lat: <i>30° 10.969</i>		Long: <i>68° 40.701W</i>											
Date: <i>19-AUG-08</i>		Time: <i>20 55</i>		Lat: <i>30° 10.994</i>		Long: <i>68° 40.708W</i>											
N #	depth	Niskin temp	Oxygens			DIC	DIC	DOC	DON	Salts	Nut1	Nut2	Bact.	POC PON Vol=	PSI Vol=	HPLC Vol=	BBOP Chla
			O2 1	O2 2	O2 3												
1																	
2																	
3																	
4																	
5																	
6																	
7																	
8																	
9																	
10																	
11																	
12																	
13																	
14																	
15																	
16																	
17																	
18																	
19																	
20																	
21																	
22																	
23																	
24																	

*NONE*







Cruise: EDD7ES			Leg: TRANSECT LL E074			Cast: CTD#10 X0508C10.01			Type: O-12004. X0508C10.01. 2066 (NOI) WEST BOUNDARY.									
Date: 20-AUG-05			Time: 1212		Lat: 30° 10.791N		Long: 69° 26.573W		Samplers: ROO, ANDREAS, MEG, Elizabeth, Paul, COURTNEY, ELISA, JESSICA.									
Date: 20-AUG-05			Time: 1410		Lat: 30° 10.737N		Long: 69° 24.563W											
N #	depth	Nlskin temp	Oxygens			DIC BATS	TOCN HANSELL	DOC NUTS	DON POCN(2)	SARS HPLC FEM	Nut1 BBOD CHL9	Nut2 NISHEN #	Bact. THORIUM (BUSSIERA)	<del>BP/FEM</del> Vols	<del>CARLSON</del> Vols	<del>HPLC</del> Vols	BBOP Chla	
			O21	O22	O23													
1	1	28.5	401			E074-29	N045-3 <del>87</del> -31	E074-31	E074-25	E074-25	E074-20	1						
2	1											2	E2059	X0508 10-02	X0508 10-02		X0508 10-02	X0508 10-02
3	20					-30	-32	-32		-26	-21	3						
4	20											4	E2060					
5	40	24.0	402			-31	-33	-33	-26	-27	-22	5					10-05	
6	40											6	E2061	10-06	10-06		10-06	10-06
7	60	22.2	403			-32	-34	-34	-27	-28	-23	7					10-07	
8	60											8	E2062	10-08	10-08		10-08	10-08
9	70					-33	-35	-35	-28	-29		9		10-09	10-09		10-09	
10	80	21.9	908 <del>404</del>			-34	-36	-36	-29	-30		10					10-10	
11	80											11	E2062	10-11	10-11		10-11	10-11
12	90	21.5	405			-35	-37	-37	-30	-31		12		10-12	10-12		10-12	10-12
13	100	21.4	406			-36	-38	-38	-31	-32		13					10-13	
14	100											14	E2064	10-14	10-14		10-14	10-14
15	110					-37	-39	-39	-32	-33		15		10-15	10-15		10-15	
16	120	21.0	407			-38	-40	-40	-33	-34		16					10-16	
17	120											17	E2065	10-17	10-17		10-17	10-17
18	140	20.9	408			-39	-41	-41	-34	-35		18					10-18	
19	140											19	E2066	10-19	10-19		10-19	10-19
20	200	20.5	409			-40	-42	-42	-35	-36		20						
21	200											21	E2067	10-21	10-21		10-21	10-21
22	300	20.0	410			-41	-43	-43	E074-36			22	E2068	10-22	10-22	10-22	10-22	10-22
23	500	19.2	411			-42	-44	-44				23					10-23	
24	700	16.9	412				-45	-45				24						

Cruise: EDDIES		Leg: TRANSCT 4 (ED74)		Cast: C70411 X0508C1-DAT		Type: O-1200M		STATION 2068 (NBQ2)							
Date: 20-AUG-05		Time: 2037		Lat: 30° 10.826N		Long: 68° 59.569W		Samplers:							
Date: 20-AUG-05		Time: 2219		Lat: 30° 10.797N		Long: 68° 59.547W									
N #	depth	Nlskdn temp	Oxygens			DIE BATS	TOCN HANSELL	BATS NUTS	POCN(2)	HPLC +FCM	NISKEN #	THORIUM (BUSSLEIG)	CARLSON Vol	FISH	DNA
			O21	O22	O23										
1	1	28.6	413			ED74-43	WB445-3 -46	ED74-46	ED74-37	ED74-37	1				
2	1										2	E2077	X0508 11-02	X0508 11-02	X0508 11-02
3	20					-44	-47	-47			3				
4	20										4	E2078			
5	40	24.2	414			-45	-48	-48	-38	-39	5				
6	40										6	E2079	11-06	11-06	11-06
7	60	22.2	415			-46	-49	-49	-39	-40	7				
8	60										8	E2080	11-08	11-08	11-08
9	70					-47	-50	-50	-40	-41	9		11-09	11-09	11-09
10	80	21.1	416			-48	-51	-51	-41	-42	10				
11	80					-48					11	E2081	11-11	11-11	11-11
12	90	21.0	417			-49	-52	-52	-42	-43	12		11-12	11-12	11-12
13	100	20.7	418			-50	-53	-53	-43	-44	13				
14	100										14	E2082	11-14	11-14	11-14
15	110	20.8	419			-51	-54	-54	-44	-45	15		11-15	11-15	
16	120	20.6	420			-52	-55	-55	-45	-46	16				
17	120										17	E2083	11-17	11-17	11-17
18	140	20.7	421			-53	-56	-56	-46	-47	18				
19	140										19	E2084	11-19	11-19	11-19
20	200	20.3	422			-54	-57	-57	-47	-48	20				
21	200										21	E2085	11-21	11-21	11-21
22	300	19.9	423			-55	-58	-58	-48		22	E2086	11-22	11-22	11-22
23	500	19.5	424			-56	-59	-59			23				
24	700						-60	-60			24				

Cruise: E0215			Leg: TRANSECT 4 E024			Cast: CTD #12 X0508C2		Type: 0-1200M STATION 2069(CNB(3))								
Date: 20-AUG-05			Time: 2359		Lat: 30° 10.769		Long: 68 47.090		Samplers:							
Date: 21-AUG-05			Time: 0140		Lat: 30° 10.807		Long: 68° 47.098									
N #	depth	Niskin temp	Oxygens			DTC BATS	TOCN HANSEL	BATS NUTS	POCN (C2)	#ALC REM	NISKEN #	THORIUM (BUCKEN)	BIO/REM DATE	CARLSON VIRUS	FISH	DNA
			O21	O22	O23											
1	1	27.8	701			E07-57	W045-3 61	E07-61	E07-49	E07-49	1					
2	1										2	E2087	X0508 12-02	X0508 12-02	X0508 12-02	X0508 12-02
3	20	24.1	702			-58	62	-62		-50	3					
4	20										4	E2088				
5	40	22.8	703			-59	63	-63	-50	-51	5					
6	40										6	E2089	12-06	12-06	12-06	12-06
7	60	21.0	704			-60	64	-64	-51	-52	7					
8	60										8	E2090	12-08	12-08	12-08	12-08
9	70					-61	65	-65	-52	-53	9		12-09	12-09	12-09	
10	80	20.6	705			-62	66	-66	-53	-54	10					
11	80										11	E2091	12-11	12-11	12-11	12-11
12	90	20.6	706			-63	67	-67	-54	-55	12		12-12	12-12	12-12	12-12
13	100	20.5	707			-64	68	-68	-55	-56	13					
14	100										14	E2092	12-14	12-14	12-14	12-14
15	110					-65	69	-69	-56	-57	15		12-15	12-15	12-15	
16	120	20.4	708			-66	70	-70	-57	-58	16					
17	120										17	E2093	12-17	12-17	12-17	12-17
18	140	20.2	709			-67	71	-71	-58	-59	18					
19	140										19	E2094	12-19	12-19	12-19	12-19
20	200	20.0	710			-68	72	-72	-59	-60	20					
21	200										21	E2095	12-21	12-21	12-21	12-21
22	300					-69	73	-73	-60		22	E2096	12-22	12-22	12-22	12-22
23	500	19.3	711			-70	74	-74			23					
24	700	17.3	712				75	-75			24					

Cruise: <u>ED17ES</u>		Leg: <u>TRANSCT 4 ED14</u>		Cast: <u>CTD#13 K0508/3-D1</u>		Type: <u>0-1200M STATION 2070 'EC' LBCD</u>											
Date: <u>21-AUG-05</u>		Time: <u>0730</u>		Lat: <u>30 10.762N</u>		Long: <u>68° 34.620</u>											
Date: <u>21-AUG-05</u>		Time: <u>0910</u>		Lat: <u>30° 10.571N</u>		Long: <u>68° 34.504</u>											
Samplers: <u>ROD, ANDREAS, MEG</u> <u>COMPTON, CRISA, JESSICA</u>																	
N #	depth	Niskin temp	Oxygens			DIC	TOCN HANSLL	BATS NATS	POCN 201	FEM	NITR <sup>14</sup>	THORIN <sup>232</sup>	← CARLSON →				
			O21	O22	O23								BAT/REM/ DAPL	VIRUS	FISH	DNA	
1	1	26.8	713			ED14-71	W0415-3 -72	ED14-71	ED14-61	ED14-61	1						
2	1										2	E					
3	20					-72	-72	-72	-62	-62	3						
4	20										4	E					
5	40	23.9	714			-73	-78	-78	-62	-63	5						
6	40										6	E		13-06	13-06	13-06	13-06
7	60	22.9	715			-74	-79	-79	-63	-64	7						
8	60										8	E		13-08	13-08	13-08	13-08
9	70	21.8	716			-75	-80	-80	-64	-65	9			13-09	13-09	13-09	
10	80	21.2	717			-76	-81	-81	-65	-66	10						
11	80										11	E		13-10	13-11	13-11	13-11
12	90	20.8	718			-77	-82	-82	-66	-67	12			13-12	13-12	13-12	13-12
13	100	20.9	719			-78	-83	-83	-67	-68	13						
14	100										14	E		13-14	13-14	13-14	13-14
15	110	20.5	720			-79	-84	-84	-68	-69	15			13-15	13-15	13-15	
16	120	20.4	721			-80	-85	-85	-69	-70	16						
17	120										17	E		13-17	13-17	13-17	13-17
18	140	20.4	722			-81	-86	-86	-70	-71	18						
19	140										19	E		13-19	13-19	13-19	13-19
20	200	20.3	723			-82	-87	-87	-71	-72	20						
21	200										21	E		13-21	13-21	13-21	13-21
22	300	20.0	724			-83	-88	-88	-72		22	E		13-22	13-22	13-22	13-22
23	500					-84	-89	-89			23						
24	700					-90	-90	-90			24						

Cruise: EDDIES			Leg: TRANSECT 4 ED74			Cast: C70414 X0508C14-01			Type: 0-1200M			STATION: 2071 NB					
Date: 21 AUG 05			Time: 1046			Lat: 30° 10.696N			Long: 68° 22.100			Samplers: MEG, ANDREAS, ROO, COURTNEY, ELZBI, JESSICA.					
Date: 21 AUG 05			Time: 1224			Lat: 30° 10.931N			Long: 68° 22.263								
N #	depth	Niskin temp	Oxygens			DIC	DIC	DOC	DON	Salts	Nut1	Nut2	Bact.	POC PON	PSI	HPLC	BBOP
			O2 1	O2 2	O2 3	BATS	TOCN HANSELL	BATS NUTS	POCN	HPLC	Niskin		B.P, PCH, DAPI	Vol=	Vol=	Vol=	Vol=
1	1	27.3	801			ED74-95	N0415-3 -91	ED74-91	ED74-73	ED74-73	1	<del>BATS</del>					
2	1										2		X0508 14-02	X0508 14-02	X0508 14-02	X0508 14-02	
3	20	29.9				-86	-92	-92		-74	3						
4	20		-								4						
5	40	24.6	802			-87	-93	-93	-74	-75	5						
6	40										6		14-06	14-06	14-06	14-06	
7	60	21.4	803			-88	-94	-94	-75	-76	7						
8	60										8		14-08	14-08	14-08	14-08	
9	70	21.9				-89	-95	-95	-76	-77	9		14-09	14-09	14-09		
10	80	20.9	804			-90	-96	-96	-77	-78	10						
11	80										11		14-11	14-11	14-11	14-11	
12	90	20.8	805			-91	-97	-97	-78	-79	12		14-12	14-12	14-12	14-12	
13	100	20.8	806			-92	-98	-98	-79	-80	13						
14	100										14		14-14	14-14	14-14	14-14	
15	110	21.5				-93	-99	-99	-80	-81	15		14-15	14-15	14-15		
16	120	20.6	807			-94	-100	-100	-81	-82	16						
17	120										17		14-17	14-17	14-17	14-17	
18	140	20.6	808			-95	-101	-101	-82	-83	18						
19	140										19		14-19	14-19	14-19	14-19	
20	200	20.3	809			-96	-102	-102	-83	-84	20						
21	200										21		14-21	14-21	14-21	14-21	
22	300	20.1	810			-97	-103	-103	-84		22		14-21	14-22	14-22	14-22	
23	500	19.3	811			-98	-104	-104			23						
24	700	17.2	812				-105	-105			24						



Cruise: EDDIES		Leg: TRANSSEC #4 ED74		Cast: CTD#6 X0508C16.DAT		Type: 0-1200M STATION 2072 WB(6)										
Date: 21-Aug-05		Time: 19:57		Lat: 30 10.589		Long: 68° 09.777										
Date: 21-Aug-05		Time: 21:40		Lat: 30 10.670		Long: 68° 09.320										
Samplers: ROD, ANDREAS, MEG COURTNEY, ELISA, JESSICA PAUL, ELIZABET.																
N #	depth	Niskin temp	Oxygens			DIC	TOCN HANSELL	BATS NUTS	POCN	HPLC	Niskin #	TRANZON	POC Vol=	PSI CARLSON Vol=	HPLC Vol=	BBOP CHL
			O21	O22	O23											
1	1	28.0	301			ED74-99	WB445-J -106	ED74-106	ED74-85	ED74-95	1					
2	1								(22)	FEM			X0508 16-02	X0508 16-02	X0508 16-02	X0508 16-02
3	20					-100	-102	-107		-86	3					
4	20	24.7									4	E2134				
5	40	23.5	302			-101	-108	-108		-86	5					
6	40										6	E2135	16-06	16-06	16-06	16-06
7	60	22.0	303			-102	-109	-109		-87	7					
8	60										8	E2136	16-08	16-08	16-08	16-08
9	70	22.0				-103	-110	-110		-88	9		16-09	16-09	16-09	
10	80	21.3	304			-104	-111	-111		-89	10					
11	80										11	E2137	16-11	16-11	16-11	16-11
12	90	21.2	305			-105	-112	-112		-90	12		16-12	16-12	16-12	16-12
13	100	21.3	306			-106	-113	-113		-91	13					
14	100										14	E2138	16-14	16-14	16-14	16-14
15	110					-107	-114	-114		-92	15		16-15	16-15	16-15	
16	120	21.0	307			-108	-115	-115		-93	16					
17	120										17	E2139	16-17	16-17	16-17	16-17
18	140	20.9	308			-109	-116	-116		-94	18					
19	140										19	E2140	16-19	16-19	16-19	16-19
20	200	20.6	309			-110	-117	-117		-95	20					
21	200										21	E2141	16-21	16-21	16-21	16-21
22	300	20.1	310			-111	-118	-118		-96	22	E2142	16-22	16-22	16-22	16-22
23	500	19.5	311			-112	-119	-119			23					
24	700	17.6	312				-120	-120			24					



Cruise: E007ES		Leg: TRANSECT #4 E074		Cast: CTD# 7 / X0508CA-07		Type: 6-1200M		STATION: 2074 NR(7) "EAST EDGE"									
Date: 22-AUG-05		Time: 0020		Lat: 30 10.822		Long: 67 44.640		Samplers:									
Date: 22-AUG-05		Time: 0205		Lat: 30 10.623		Long: 67 44.304											
N #	depth	Niskin temp	Oxygens			DIC	TOCN HANSEL	BATS NUTS	POCN (2e)	HPLC FCM	Nitreen #	MONTANA (BURBANK)	BP/FCH DAPT	CARLSON Virus	HANC Virus	FISH	DNA
			O21	O22	O23												
1	1	28.8	313			E074-113	X0415-3 -121	E074-121	E074-92	E074-97	1						
2	1										2	E2143	X0508 17-02	X0508 17-02	X0508 1702	X0508 17-02	
3	20					-114	-122	-122		-98	3						
4	20										4	E2144					
5	40	24.1	314			-115	-123	-123	-98	-99	5						
6	40										6	E2145					
7	60	22.2	315			-116	-124	-124	-99	-100	7						
8	60										8	E2146					
9	70					-117	-125	-125	-100	-101	9						
10	80	21.3	316			-118	-126	-126	-101	-102	10						
11	80										11	E2147					
12	90	21.3	317			-119	-127	-127	-102	-103	12						
13	100	21.3	318			-120	-128	-128	-103	-104	13						
14	100										14	E2148					
15	110					121	-129	-129	-104	-105	15						
16	120	21.0	319			122	-130	-130	-105	-106	16						
17	120										17	E2149					
18	140	20.8	320			123	-131	-131	-106	-107	18						
19	140										19	E2150					
20	200	20.4	321			124	-132	-132	-107	-108	20						
21	200										21	E2151					
22	300	20.3	322			125	-133	-133	-108		22	E2152					
23	500	18.9	323			126	-134	-134			23						
24	700	17.2	324				-135	-135			24						

Cruise: <u>ED07ES</u>			Leg: <u>TRANSECT 4 EDT4</u>			Cast: <u>CID#18.XOSORCR.DAT</u>			Type: <u>0-1200M STATION 2011 (PROBABLY ASN OF EC...?)</u>			Samplers: <u>ROD, ANDREWS, MGC.</u>					<u>WB11</u>	
Date: <u>22-AUG-05</u>			Time: <u>1338</u>			Lat: <u>30 00.037</u>			Long: <u>68 40.763</u>									
Date: <u>22-AUG-05</u>			Time: <u>1436</u>			Lat: <u>29 59.889</u>			Long: <u>68 40.823W</u>									
N #	depth	Niskin temp	Oxygens			DIC	DIC	DOC	DON	Salts	Nut1	Nut2	Bact.	POC	PSI	HPLC	BBOP	
			O21	O22	O23	BATS	POCN	BATS NUTS	POCN	HALC	Niskin	Vol=	Vol=	Vol=	Chla			
1	1	27.0	401			ED074-127	ED074-136	ED074-136	ED074-109	ED074-109	1							
2	1										2							
3	20					-128	-137	-132		-116	3							
4	20										4							
5	40	24.4	402			-129	-138	-134	-110	-111	5							
6	40										6							
7	60	23.1	403			-130	-139	+39	111	-112	7							
8	60										8							
9	70	22.8	<sup>408</sup> 404			-131	-140	-140	-112	-113	9							
10	80	21.9	405			-132	-141	-141	-113	-114	10							
11	80										11							
12	90	21.8	406			-133	-142	-142	-114	-115	12							
13	100	21.8	407			-134	-143	-143	-115	-116	13							
14	100										14							
15	110	21.5	408			-135	-144	-144	-116	-117	15							
16	120	21.4	409			-136	-145	-145	-117	-118	16							
17	120										17							
18	140					-132	-146	-146	-118	-119	18							
19	140										19							
20	200	21.1	410			-138	-147	-147	-119	-120	20							
21	200										21							
22	300	20.9	411			-139	-148	-148	-120		22							
23	500	20.6	412			-140	-149	-149			23							
24	700						-150	-150			24							

\* POC SAMPLE LOST - TORN FILTER!

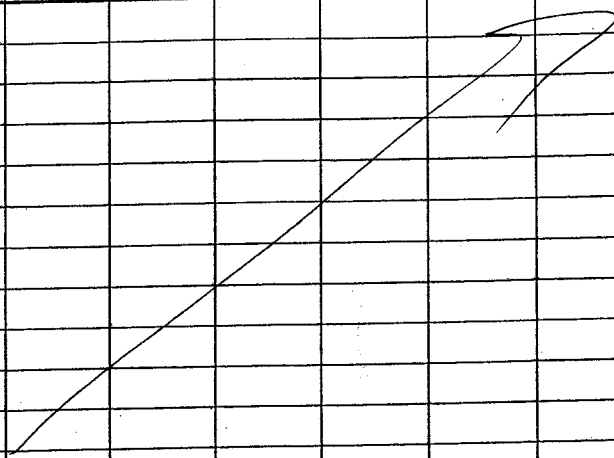
Cruise: <u>F-00263</u>		Leg: <u>TRANSIT 4 E074</u>		Cast: <u>CID#19 X00XC19.M</u>		Type: <u>0-ROOM STATION 2010-5</u>		Midway 2010 + 2011		Samplers: <u>WB12</u>							
Date: <u>22-AUG-05</u>		Time: <u>1338</u>		Lat: <u>30 30.087</u>		Long: <u>68 40.763</u>		No SAMPLES									
Date: <u>21-AUG-05</u>		Time: <u>1436</u>		Lat: <u><del>30</del> 29 59.889</u>		Long: <u>68 40 823</u>											
N #	depth	Niskin temp	Oxygens			DIC	DIC	DOC	DON	Salts	Nut1	Nut2	Bact.	POC PON Vol=	PSI Vol=	HPLC Vol=	BBOP Chla
			O2 1	O2 2	O2 3												
1																	
2																	
3																	
4																	
5																	
6																	
7																	
8																	
9																	
10																	
11																	
12																	
13																	
14																	
15																	
16																	
17																	
18																	
19																	
20																	
21																	
22																	
23																	
24																	

NO DATA

Cruise: EDOZES			Leg: TRANSSECT 4 E074			Cast: <del>C70</del> X05080.DAT			Type: 0-1200m			STATION 2010 .. PRESUMABLY SW OF E? NB(13)					
Date: 22-Aug-05			Time: 15.22		Lat: 30° 00.129N		Long: 68° 47.834W			Samplers: ROO, ANDREAS, MEE, <del>DAUTE</del> COURTNEY, ELISA, JESSICA							
Date: 22-Aug-05			Time: 16.58		Lat: 30° 00.132N		Long: 68° 46.660W										
N #	depth	Niskin temp	Oxygens			DIC	DIC	DOC	DON	Salts	Nut1	Nut2	Bact.	POC	PSI	HPLC	BBOP
			O21	O22	O23	BAAS	TOCN	BAAS	DOCN	HAC	NitN	TRON		Vol=	Vol=	Vol=	CHL
					BAAS	HANSELL	NUIS	DOCN	HAC				REM/BP	PSI	HPLC	BBOP	SUGARS
1	1	27.2	413		E074-28	E074-101	W0415-3 151	E074-151	E074-171	E074-121	1						
2	1										2	E2161		X0508 20-02	X0508 20-02	X0508 20-02	X0508 20-02
3	20				E074-29	-142	152	-152		-122	3						
4	20										4	E2162					
5	40	24.9	414		E074-30	-143	-153	-153	-122	-123	5						20-05
6	40										6	E2163		20-05	20-05	20-05	20-05
7	60	22.8	415		E074-31	-144	-154	-154	-123	-124	7						20-07
8	60										8	E2164		20-08	20-08	20-08	20-08
9	70	21.9				-145	-155	-155	-124	-125	9			20-09	20-09	20-09	
10	80	21.6	416			-146	-156	-156	-125	-126	10						20-10
11	80										11	E2165		20-11	20-11	20-11	20-11
12	70					-147	-157	-157	-126	-127	12			20-12	20-12	20-12	20-12
13	100	21.2	417			-148	-158	-158	-127	-128	13						20-13
14	100										14	E2166		20-14	20-14	20-14	20-14
15	110	21.2	418			-149	-159	-159	-128	-129	15			20-15	20-15	20-15	
16	120	21.1	419			-150	-160	-160	-129	-130	16						20-16
17	120										17			20-17	20-17	20-17	20-17
18	140	21.0	420			-151	-161	-161	-130	-131	18						20-18
19	140										19	E2167		20-19	20-19	20-19	20-19
20	200	20.8	421			-152	-162	-162	-131	-132	20						
21	200										21	E2168		20-21	20-21	20-21	20-21
22	300	20.9	422			-153	-163	-163	-132		22	<del>E2168</del>		20-22	20-22	20-22	20-22
23	500	20.3	423			-154	-164	-164			23						20-23
24	700	17.7	424				-165	-165			24						



Cruise E007ES		Leg TRAVERSE 4 E074		Cast: CD#22, XOSORC22.D#		Type 0-1200M		STATION 2010.69 (Midway 2010+2069)									
Date: 22-Aug-05		Time: 2115		Lat: 38° 05.820 N		Long: 68° 47.050		Samplers: NONE									
Date: 22-Aug-05		Time: 2217		Lat: 30° 05.392		Long: 68° 47.079											
N #	depth	Niskn temp	Oxygens			DIC	DIC	DOC	DON	Salts	Nut1	Nut2	Bact.	POC PON Vol=	PSI Vol=	HPLC Vol=	BBOP Chla
			O2 1	O2 2	O2 3												
1																	
2																	
3																	
4																	
5																	
6																	
7																	
8																	
9																	
10																	
11																	
12																	
13																	
14																	
15																	
16																	
17																	
18																	
19																	
20																	
21																	
22																	
23																	
24																	



None

Cruise: E007ES			Leg: TRANSECT 4 E074			Cast: CTD#23 X0508C23.DMP			Type: O-200H			STATION: HiF Midway 2069.5 + 2010.5. (NB13)						
Date: 22 Aug 05		Time: 23-06		Lat: 30° 05.331 N		Long: 68° 40.861		Samplers: MEG, ANDREW, ROD, BRIDY, COURTNEY, JESSICA, PAUL, ELIZABETH.										
Date: 23 Aug 05		Time: 0052		Lat: 30° 05.367 N		Long: 68° 40.809												
N #	depth	Niskin temp	Oxygens			BADS	TOCN HANSELL	BADS	POCN (20)	HOLC FCM	NITHEX #	TURBIDITY (KREISEL)	CARLSON →					
			O21	O22	O23								REM DAPI BP	VIRUS	DNA	FISH	SUGARS X0508 23-01	
1	1	27.7	713			E074-157	WB415-3 173	E074-173	E074-160	E074-183	1							
2	1										2	E2178	X0508 23-02	X0508 23-02	X0508 23-02	X0508 23-02		
3	20					-158	-174	-173		-134	3							
4	20										4	E2178						
5	40	23.2	714			-159	-175	-175	-141	-135	5							23-05
6	40										6	E2179	23-06	23-06	23-06	23-06		
7	60	21.6	715			-160	-176	-176	-142	-136	7							23-07
8	60										8	E2180	23-08	23-08	23-08	23-08		
9	70	21.6					-177	-177	-143	-137	9		23-09	23-09	23-09			
10	80	20.6	716			-161	-178	-178	-144	-138	10							23-10
11	80										11	E2180	23-11	23-11	23-11	23-11		
12	90	21.6	717				-179	-179	-145	-139	12		23-12	23-12	23-12	23-12		23-12
13	100	21.0	718			-162	-180	-180	-146	-140	13							23-13
14	100										14	E2182	23-14	23-14	23-14	23-14		
15	110	21.2	719				-181	-181	-147	-141	15		23-15	23-15	23-15			
16	120	21.3	710			-163	-182	-182	-148	-142	16							23-16
17	120										17	E2183	23-17	23-17	23-17	23-17		
18	140	21.2	720			-164	-183	-183	-149	-143	18							23-18
19	140										19	E2184	23-19	23-19	23-19	23-19		
20	200	20.7	721			-165	-184	-184	-150	-144	20							
21	200										21	E2185	23-21	23-21	23-21	23-21		
22	300	20.4	722			-166	-185	-185	-151		22	E2186	23-22	23-22	23-22	23-22		23-22
23	500	19.8	723			-167	-186	-186			23							23-23
24	700	17.9	724				-187	-187			24							





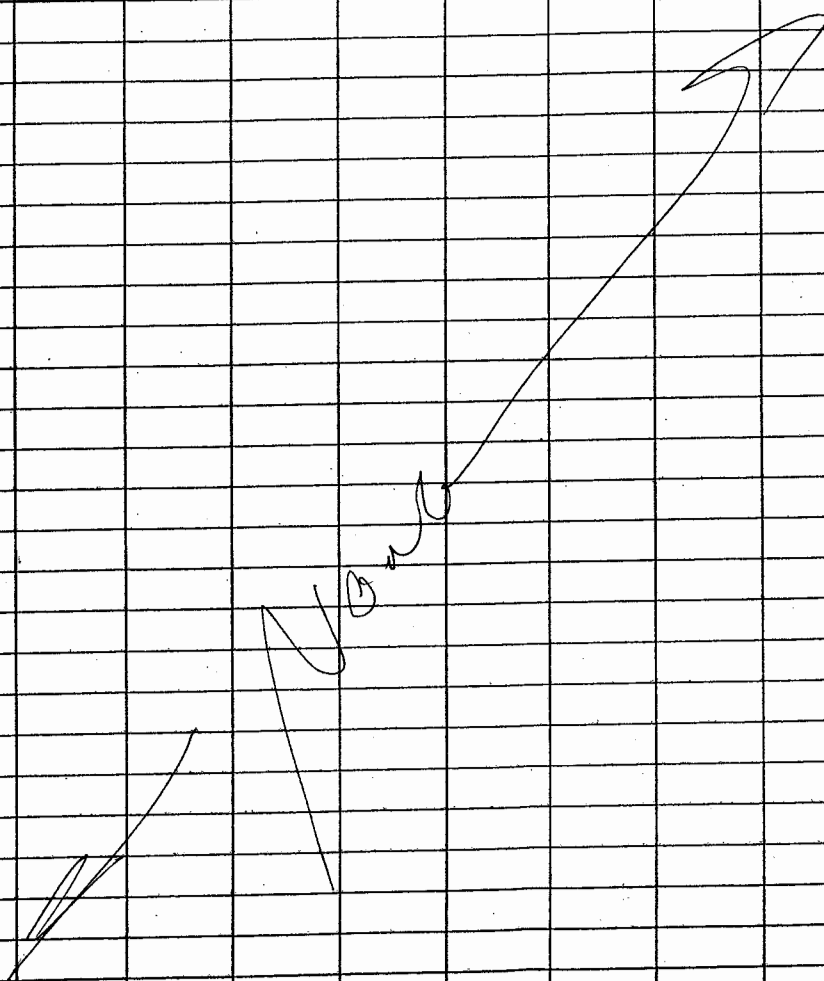
Cruise: ED1725			Leg: 7 RANSE? 4 ED74			Cast: C70#25 X05025.DAT Type 0-TROOM : TRAPS Array A' - N3(14)											
Date: 23-Aug-05			Time: 1352		Lat: 29 56.874		Long: 68 58.524		Samplers: ALL								
Date: 23-Aug-05			Time: 1526		Lat: 29 56.923		Long: 68 58.514										
N #	depth	Niskrn temp	Oxygens			DIC	DIC	DOC	DON	Salts	Nut1	Nut2	Bact.	POC PON Vol=	PSI Vol=	HPLC Vol=	BBOP Chla
			O2 1	O2 2	O2 3		TOCN	NU23	PCCN	H4RE	NitroN	BBOD					
1	1	28.1	801			ED74-158	12045-3 188	ED74-198	ED74-152	ED74-115	1	*46					KUGAS K508 25-02
2	1									2		X0508 25-02	X0508 25-02	X0508 25-02	X0508 25-02		
3	20					-169	189	189		-146	3	*41					
4	20										4						25-05
5	60	25.6	802			-170	190	190	SAMPLE 18-153 COST	147	5	*42	X0508 25-06	X0508 25-06	25-06	25-06	
6	60										6						25-07
7	60	21.8	803			-171	191	191	-154	148	7	*43					
8	60										8		25-08	25-08	25-08	25-08	
9	80	21.9				-172	192	192	-158	149	9		25-09	25-09	25-09		
10	80	21.3	804			-172	193	193	-155	150	10						25-10
11	80										11		25-11	25-11	25-11	25-11	
12	90	21.2	805				194	194	-157	151	12		25-12	25-12	25-12	25-12	25-12
13	100	21.0	806			-173	195	195	-158	152	13						25-13
14	100										14		25-14	25-14	25-14	25-14	
15	110	21.3	807			-174	196	196	-159	153	15		25-15	25-14	25-14		
16	110	21.3	808			-174	197	197	-160	154	16						25-16
17	120										17		25-17	25-17	25-17	25-17	
18	140	21.2	809			-175	198	198	-161	155	18						25-18
19	160										19		25-19	25-19	25-19	25-19	
20	200	21.1	810			-176	199	199	-162	156	20						
21	200										21		25-21	25-21	25-21	25-21	
22	300	21.0	811			-177	200	200	-163		22		25-22	25-22	25-22	25-22	25-22
23	500	20.8	812			-178	201	201			23						25-23
24	700						202	202			24						



Cruise: E10025			Leg: TRANSECT L EDU			Cast: C10 # 27 X050827			Type: 0-500M 1950 WB(16)			Samplers: NONE					
Date: 23-Aug-05			Time: 2000		Lat: 29° 49.222N		Long: 68° 59.678W			NONE							
Date: 23-Aug-05			Time: 2036		Lat: 29° 49.117N		Long: 69° 00.136W										
N #	depth	Niskrn temp	Oxygens			DIC	DIC	DOC	DON	Salts	Nut1	Nut2	Bact.	POC PON Vol=	PSI Vol=	HPLC Vol=	BBOP Chla
			O2 1	O2 2	O2 3												
1																	
2																	
3																	
4																	
5																	
6																	
7																	
8																	
9																	
10																	
11																	
12																	
13																	
14																	
15																	
16																	
17																	
18																	
19																	
20																	
21																	
22																	
23																	
24																	

NONE

Cruise: <i>EM105</i>		Leg: <i>TRANSSEC B E073</i>		Cast: <i>C10 #28 Y050XC28</i>		Type: <i>0-200m Quick Profile</i>		<del>W18</del> <i>1.0 km SW of 1950</i>									
Date: <i>23/AUG/05</i>		Time: <i>2153</i>		Lat: <i>29° 43.857</i>		Long: <i>68° 53.383</i>		Samplers: <i>W18 (7)</i>									
Date: <i>23/AUG/05</i>		Time: <i>2215</i>		Lat: <i>29° 43.200</i>		Long: <i>68° 53.504</i>		<i>Now</i>									
N #	depth	Niskin temp	Oxygens			DIC	DIC	DOC	DON	Salts	Nut1	Nut2	Bact.	POC PON Vol=	PSI Vol=	HPLC Vol=	BBOP Chla
			O2 1	O2 2	O2 3												
1																	
2																	
3																	
4																	
5																	
6																	
7																	
8																	
9																	
10																	
11																	
12																	
13																	
14																	
15																	
16																	
17																	
18																	
19																	
20																	
21																	
22																	
23																	
24																	



Cruise: <i>EODIES</i>			Leg: <i>TRANSACT 4 EODIE</i>			Cast: <i>29 : Y0508029.M1</i>			Type: <i>0-200m Quick R/P water @ 1950.5' NB(17) NB(18)</i>								
Date: <i>23/09/05</i>		Time: <i>2304</i>		Lat: <i>29° 48.950N</i>		Long: <i>68° 53.873</i>		Samplers:									
Date: <i>24/09/05</i>		Time: <i>2328</i>		Lat: <i>29° 48.956N</i>		Long: <i>68° 53.865</i>		<i>None</i>									
N #	depth	Niskrn temp	Oxygens			DIC	DIC	DOC	DON	Salts	Nut1	Nut2	Bact.	POC PON Vol=	PSI Vol=	HPLC Vol=	BBOP Chla
			O2 1	O2 2	O2 3												
1																	
2																	
3																	
4																	
5																	
6																	
7																	
8																	
9																	
10																	
11																	
12																	
13																	
14																	
15																	
16																	
17																	
18																	
19																	
20																	
21																	
22																	
23																	
24																	

*None*

*None*

Cruise: <i>EDPES</i>		Leg: <i>TRANSSEC 4 E074</i>		Cast: <i>30 X050YK30.DAT</i>		Type: <i>0-200m Quick Profile @ Traps B</i>		Samplers: <i>NONE</i>		WB19							
Date: <i>28-AUG-05</i>		Time: <i>0653</i>		Lat: <i>29° 50.209N</i>		Long: <i>69° 05.937W</i>											
Date: <i>28-AUG-05</i>		Time: <i>0512</i>		Lat: <i>29° 50.265N</i>		Long: <i>69° 05.865W</i>											
N #	depth	Nskin temp	Oxygens			DIC	DIC	DOC	DON	Salts	Nut1	Nut2	Bact.	POC PON Vol=	PSI Vol=	HPLC Vol=	BBOP Chla
			O2 1	O2 2	O2 3												
1																	
2																	
3																	
4																	
5																	
6																	
7																	
8																	
9																	
10																	
11																	
12																	
13																	
14																	
15																	
16																	
17																	
18																	
19																	
20																	
21																	
22																	
23																	
24																	

NONE







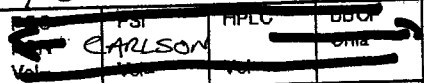
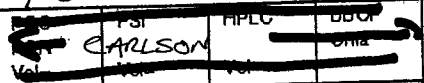


Cruiser <u>ENDUR</u>			Leg <u>TRANSSECT 4 E04</u>			Cast: <u>CTD 34: X0508C340</u>			Type <u>O-ROON</u> STATION <u>2009 NB 21</u>			Samplers:					
Date: <u>25-AUG-05</u>			Time: <u>2231</u>			Lat: <u>30° 00.07'N</u>			Long: <u>68° 59.496'W</u>								
Date: <u>25-AUG-05</u>			Time: <u>0015</u>			Lat: <u>30° 00.33'N</u>			Long: <u>68° 58.556'W</u>								
N #	depth	Niskin temp	Oxygens			DIC	DIC	DOC	DON	Salts	Nut2	Bact.	POC	PSI	HPLC	BBOP	SUGAR
			021	022	023	BATES	HANSEL	BATES	POCN	HALC		Filter	N. shcn	Thiom	Vol=	Vol=	
1	1	27.8	401			ED04-F2	NOUIS-3 238	ED04 -238	ED04 -193	ED04 -181	* JJ1	1 (1)					X0508 34-01
2	1										* JJ2	2 (1)	E2245	X0508 34-02	X0508 34-02	X0508 34-02	X0508 34-02
3	20	22.6	402				239	-239	-194	-182	* JJ2	3 (4)					X0508 34-03
4	40						240				* JJ3	4 (4)	E2246				X0508 34-03
5	60	20.2	403				235	-240	-195	-193	* JJ3	5 (6)					X0508 34-03
6	60											6 (6)	E2247	X34-06	34-06	34-06	34-06
7	80	20.2	404			* -194	241	-241	-196	-184	* JJ4	7 (8)					X0508 34-07
8	80						235					8 (8)	E2248	X34-08	34-08	34-08	34-08
9	100	20.1	405			* -194	242	-242	-197	-185	* JJ5	9 (10)					X0508 35-09
10	100						237					10 (10)	E2249	X34-10	34-10	34-10	34-10
11	126	20.2	406			* -196	243	-243	TWO FILTERS -198	-186	* JJ6	11 (20)					X0508 35-11
12	120						238					12 (20)	E2250	X34-12	34-12	34-12	34-12
13	140					* -196	244	-244	-199	-187	* JJ7	13 (4)					X0508 35-13
14	140						239					14 (4)	E2251	X34-14	34-14	34-14	34-14
15	200					* -198	245	-245	TOTAL # -200 FILTER	-188	* JJ8	15 (20)					35-15
16	200						240					16 (20)	E2252	X34-16	34-16	34-16	34-16
17	300					* -199	246	246	-201		* JJ9	17 (30)					35-17
18	300						247					18 (30)	E2253	X34-18	34-18	34-18	34-18
19	500	19.4	407				242	242				19 (50)	E2254				35-19
20	600	18.3	408				243	243				20 (60)	E2255	X34-20	34-20	34-20	34-20
21	700	16.2	409				249	249			* JJ10	21 (70)	E2256	X34-21	34-21	34-21	35-21
22	850	15.3	410			* -200	250	250			* JJ11	22 (85)	E2257	X34-22	34-22	34-22	35-22
23	900	14.8	411				251	251			* JJ12	23 (90)	E2258	X34-23	34-23	34-23	35-23
24	1000	13.8	412				252	252				24 (100)	E2259	X34-24	34-24	34-24	35-24



Cruise: <i>E00205</i>		Leg: <i>TRANSCT 4: E074</i>		Cast: <i>C70436, X50R36</i>		Type: <i>0-1200m: STATION 1949 NB 23</i>		Samplers: <i>NONE</i>									
Date: <i>25-Aug-06</i>		Time: <i>0631</i>		Lat: <i>29° 49.285' N</i>		Long: <i>69° 12.262' W</i>											
Date: <i>25-Aug-06</i>		Time: <i>0732</i>		Lat: <i>29° 49.837' N</i>		Long: <i>69° 11.856' W</i>											
N #	depth	Niskin temp	Oxygens			DIC	DIC	DOC	DON	Salts	Nut1	Nut2	Bact.	POC PON Vol=	PSI Vol=	HPLC Vol=	BBOP Chla
			O21	O22	O23												
1																	
2																	
3																	
4																	
5																	
6																	
7																	
8																	
9																	
10																	
11																	
12																	
13																	
14																	
15																	
16																	
17																	
18																	
19																	
20																	
21																	
22																	
23																	
24																	

*NO!*

Cruise: <u>EDVICS</u>		Leg: <u>TRANSCT 4: E074</u>		Cast: <u>0237: X050837.2</u>		Type: <u>0-1200m: STATION NB(24) 1909-08</u>		Station: <u>1909-08</u>		Samplers: <u>MER, ROD, ANDREAS, PAUL, Elizabeth</u>							
Date: <u>25 Aug-05</u>		Time: <u>1814</u>		Lat: <u>29° 54.606</u>		Long: <u>69° 11.801W</u>		<u>Carlsberg, Elisa, JESSICA.</u> 									
Date: <u>25 Aug-05</u>		Time: <u>0951</u>		Lat: <u>29° 55.932</u>		Long: <u>69° 11.371W</u>											
N #	depth	Niskin temp	Oxygens			DIC	DIC	DOC	DON	Salts	Nut1	Nut2	Bact.				
			O21	O22	O23	BATS	HANSELL	BATS	POEN	HALC	Nut1	Nut2	Bact.	BP/PCM DATE	URS	PISH	DMT
1	1	27.9	413			ED14-201	<del>ED14-203</del>	ED14-253	<del>ED14-262</del>	ED14-189	1			X0508 37-02	X0508 32-02	X0508 32-02	X0508 37-02
2	1										2	E2260					
3	20							-254	-254	<del>-202</del>	-190	3					
4	20										4	E2261					
5	40	21.9	414			<del>ED14-202</del>		-255	-255	-203	-191	5					
6	40										6	E2262	37-06	37-06	37-06	37-06	
7	60	20.5	415			-202		-256	-256	-204	-192	7					
8	60										8	E2263	37-08	37-08	37-08	37-08	
9	70	20.5	416					-257	-257	-205	-193	9					
10	80	20.3	417			-203		-258	-258	-206	-194	10					
11	80										11	E2264	37-10	37-11	37-11	37-11	
12*	90	20.3	418	* SUSPECT (DRAW NOT SURE IF VALVE OPEN)				-259	-259	-207	-195	12					
13	100	20.0	419			-204		-260	-260	-208	-196	13					
14	100										14	E2265	37-14	37-14	37-14	37-14	
15	110	20.0	420			<del>-206</del>		-261	-261	-209	-197	15					
16	120	20.2	421			-205		-262	-262	-210	-198	16					
17	120										17	E2266	37-17	37-17	37-17	37-17	
18	140					<del>-207</del>		-263	-263	-211	-199	18					
19	140										19	E2267	37-19	37-19	37-19	37-19	
20	200	19.7	422			-206		-264	-264	-212	-200	20					
21	200										21	E2268	37-21	37-21	37-21	37-21	
22	300	19.3	423			<del>-208</del>		-265	-265	-213		22	E2269	37-22	37-22	22-22	37-22
23	500							-266	-266			23					
24	700	17.0	424					-267	-267			24					

NB25

Cruise: <u>ED125</u>		Leg: <u>TRANSCT 4 ED74</u>		Cast: <u>CTD# 58</u>		Type: <u>0-1200M STATION 2008</u>		Station: <u>X0508C38.DAT</u>								
Date: <u>25-AUG-08</u>		Time: <u>1055</u>		Lat: <u>30°00.29'N</u>		Long: <u>69° 11.878'W</u>		Samplers: <u>Ron Aronow, Mary Elizabeth, Paul Carthey, Elizabeth &amp; LEUCINE STOCK GONE!</u>								
Date: <u>25-AUG-08</u>		Time: <u>1238</u>		Lat: <u>30°00.15'N</u>		Long: <u>69° 10.518'W</u>										
N #	depth	Niskin temp	Oxygens			DIC	DIC	DIC	DON							
			O21	O22	O23	BATS	TOCN	PAR NUTS	POCN	HALC	NISKA	THORIUM	REY/DAI/GO	CARLESON	FILED	DOB
					<u>SALTS</u>		<u>TRANSCT</u>		<u>(2P)</u>	<u>REY</u>	<u>SE</u>	<u>BENTON</u>				
1	1	27.3	701		<u>610</u>	<u>202</u> <u>ED74</u>	<u>19415-3</u> <u>2.68</u>	<u>ED74-257</u>	<u>202</u> <u>ED74-244</u>	<u>ED74-201</u>	1 (1)					
2	1										2 (1)	E 2270	X0508 38-02	X0508 38-02	X0508 38-02	X0508 38-02
3	40	22.9	702		<u>611</u>			<u>-269</u>	<u>-269</u>	<u>203</u> <u>215</u>	<u>-202</u>	3 (4)				
4	40											E 2271				
5	60	20.3	703		<u>612</u>			<u>-205</u>	<u>-270</u>	<u>-270</u>	<u>204</u> <u>216</u>	<u>-203</u>	5 (60)			
6	60											E 2272	38-06	38-06	38-06	38-06
7	80	20.4	704		<u>-207</u>			<u>-271</u>	<u>-271</u>	<u>-27</u>	<u>-204</u>	7 (60)				
8	80											E 2273	38-08	38-08	38-08	38-08
9	100	20.1	705		<u>-210</u>			<u>-272</u>	<u>-272</u>	<u>-28</u>	<u>-205</u>	9 (100)				
10	100											E 2274	38-10	38-10	38-10	38-10
11	120	20.1	706		<u>-211</u>			<u>-273</u>	<u>-273</u>	<u>-24</u>	<u>-206</u>	11 (120)				
12	120											E 2275	38-12	38-12	38-12	38-12
13	140				<u>-212</u>			<u>-274</u>	<u>-274</u>	<u>-226</u>	<u>-207</u>	13 (140)				
14	140											E 2276				
15	200				<u>-213</u>			<u>-275</u>	<u>-275</u>	<u>-221</u>	<u>-208</u>	15 (200)				
16	200											E 2277	38-16	38-16	38-16	38-16
17	300	19.8	707		<u>613</u>			<u>-214</u>	<u>-276</u>	<u>-276</u>	<u>-222</u>	<u>-209</u>	17 (300)			
18	300											E 2278	38-18	38-18	38-18	38-18
19	500							<u>-277</u>	<u>-277</u>			E 2279				
20	600	18.4	708		<u>614</u>			<u>-278</u>	<u>-278</u>			E 2280	38-20	38-20	38-20	38-20
21	700	16.6	709		<u>615</u>			<u>-215</u>	<u>-279</u>	<u>-279</u>		E 2281	38-21	38-21	38-21	
22	850	14.9	318		<u>616</u>			<u>-216</u>	<u>-280</u>	<u>-280</u>		E 2282	38-22	38-22	38-22	
23	900	13.9	711		<u>617</u>			<u>-281</u>	<u>-281</u>			E 2283	38-23	38-23	38-23	
24	1000	12.9	712		<u>618</u>			<u>-282</u>	<u>-282</u>			E 2284	38-24	38-24	38-24	









