

Cruise: EDDZES		Leg: TRANSECT (3)			Cast: CTD#1		Type: 0-700M: X0506C1.DAT			STATION- BATS "CONTIN"							
Date: 6-JUL-05		Time: 2130		Lat: 31° 40.124' N		Long: 64° 10.097'		Samplers: ROD, DES, MES, CARLQ, COURTNEY, ELISA STEVE, ELIZABETH									
Date: 6-JUL-05		Time: 22 ³⁰ / ₄₅		Lat: 31° 39.977' N		Long: 64° 10.756'											
N #	depth	Niskrn temp	Oxygens			DIC BATS	DOC Toc/TON (Hansen)	POC NUTS (BATS)	DON POCN (2.0 x 3.0)	Salts	Nutr HP/LC +FC	Nutr T KOLUM (Bioscience)	BATS BP/REM DATA	DOC VIRUS	SUGARS	FISH	DNA
			O21	O22	O23												
1	1	24.0	301			WR3-1	ND415-1	E073-1	E073-1		E073-1			X0506 01-01			
2	1	24.8									*E-1000	X0506 01-02	X0506 01-02		X0506 01-02	X0506 01-02	
3	20	24.8	302			-2	-2	-2	E073-2		E073-2						
4	20										*-1001	X0506 01-03					
5	40	22.3	303			-3	-2	-3	E073-3		E073-3			X0506 01-05			
6	40										*-1002	X0506 01-06	X0506 01-06		X0506 01-06	X0506 01-06	
7	60	21.3	304			-4	-4	-4	E073-4		E073-4			X0506 01-08			
8	60										*-1003	X0506 01-08	01-08		X0506 01-08	X0506 01-08	
9	70	20.8	305			-5	-5	-5	E073-5		-5			X0506 01-09			
10	80	20.6	306			-6	-6	-6	E073-6		-6			X0506 01-09			
11	80										*-1004	X0506 01-11	01-11		X0506 01-11	X0506 01-11	
12	90	20.4	307			-7	-7	-7	E073-7		-7			X0506 01-12			
13	100	20.3	308			-8	-8	-8	E073-8		-8			X0506 01-13			
14	100										*-1005	X0506 01-14	01-14		X0506 01-14	X0506 01-14	
15	110	20.2	309			-9	-9	-9	E073-9		-9			X0506 01-15			
16	120	20.1	310			-10	-10	-10	E073-10		-10			X0506 01-16			
17	120	20.3	310			-10	-10	-10	E073-10		*-1006	X0506 01-17	01-17		X0506 01-17	X0506 01-17	
18	140	19.9	311			-11	-11	-11	E073-11		-11			X0506 01-18			
19	140										*-1007	X0506 01-19	01-19		X0506 01-19	X0506 01-19	
20	200	19.6	312			-12	-12	-12	E073-12								
21	200										*-1008	X0506 01-21	01-21		X0506 01-21	X0506 01-21	
22	300	19.5	313			-13	-13	-13	E073-13		*1009	X0506 01-22	01-22		X0506 01-22	X0506 01-22	
23	500	18.0	314			-14	-14	-14	E073-14					X0506 01-23			
24	700	15.5	315			-15	-15	-15	E073-15								

⊕ NO SAMPLE POC/N, POC/FM
ran out of water

Cruise: EDDIES		Leg: TRANSECT (3)			Cast: CTD# 3		Type: 0-700M : X0506C2.DAT		STATION: WBL4 / 2317 'EC'								
Date: 07-Jul-05		Time: 1217		Lat: 30° 54.078' N		Long: 66° 17.330' W		Samplers: RAO, DEB, MEC, CLAYTON, MARGOLITZ, ELISA, STEVE, ELIZABETH.									
Date: 07-Jul-05		Time: 1335		Lat: 30° 53.922' N		Long: 66° 17.348' W											
N #	depth	Niskin temp	Oxygens			DIC	TOC/N	NUTS	POC/N	Salts	HALC	TARZUN	BIOAL	POC PON	PEP	HFEG	OTHER
			O21	O22	O23	BATS	(CHAMSELL)	(BATS)	(21, *31)	BATS	(BATS)	(BATS)	(BATS)	B/P/PM/DAT	VRUS	SUGARS	FISH
1	1	27.0	316			W83-15	W845-16	E073-16	E083-16	601	E073-13						
2	1										E-1010	X0506	X0506		X0506	X0506	
3	20	23.8	317			-16	W845-17	-17	-17	602	-14						
4	20										E-1011						
5	40	21.8	318			-17	-18	-18	-18	603	-15				X0506		
6	40										E-1012	X0506	X0506		X0506	X0506	
7	60	20.7	319			-18	-19	-19	-19	604	-16				02-07		
8	60										E-1013	X0506	X0506		02-08	02-08	
9	70	20.4	320			-19	-20	-20	-20	605	-17				02-09		
10	80	20.5	321			-20	-21	-21	-21	606	-18				02-10		
11	80										E-1014	X0506	X0506		02-11	02-11	
12	90	20.5	322			-21	-22	-22	-22	607	-19				02-12	02-12	
13	100		323			-22	-23	-23	-23	608	-20				02-13		
14	100	20.9				↓	↓	↓	↓	↓	↓	E-1015	X0506	X0506		02-14	02-14
15	110	20.2	324			-23	-24	-24	-24	609	-21				02-15		
16	120	20.1	401			-24	-25	-25	-25	610	-22				02-16		
17	120										E-1016	X0506	X0506		02-17	02-17	
18	140	19.9	402			-25	-26	-26	-26	611	-23				02-18		
19	140										E-1017	X0506	X0506		02-19	02-19	
20	200	19.8	403			-26	-27	-27	-27	612	-24						
21	200										E-1018	X0506	X0506		02-21	02-21	
22	300	19.5	404			-27	-28	-28	-28	613		E-1019	X0506	X0506	02-22	02-22	
23	500	19.2	405			W83-28	-29	-29	-29	614					02-23		
24	700'	17.0	406				-30	-30	-30	615							

Failed
Sigsbee

CARLSON

Cruise: EDDIES		Leg: TRANSECT 3 (EDT3)			Cast: C042 #4		Type: G-700m		: X0506C.DAT		: STATION W02 W02 / 2376						
Date: 02-JUL-05		Time: 2015		Lat: 31° 04.674' N		Long: 066° 17.315' W		Samplers: Rep, Deb, Meg, Craig, Courtney, Eliza, Steve, Pike, Elizabeth									
Date: 02-JUL-05		Time: 2139		Lat: 31° 03.903' N		Long: 66° 17.465' W											
N #	depth	Niskin temp	Oxygens			DIC BATS	TOC N HANSELL	NUTS BATS	POCN (2, 3)	HPLC/ FCM	THORIUM BUENNER	NISKIN #	BP/FCM DATE	PFC VOL	PFC VOL	FISH VOL	DNA DNA
			O21	O22	O23												
1	1	27.5	407			NR 415-1 -31	EDT3-31	EDT3-31	EDT3-25		1						
2	1									E-1020	2	X0506 -04-02	X0506 04-02		X0506 04-02	X0506 04-02	
3	20					-30	-32	-32			3						
4	20									E-1021	4						
5	40	21.8	408			-31	-33	-33	-32	-27	5				04-05		
6	40									E-1022	6	04-06	04-06		04-06	04-06	
7	60	20.9	409			-32	-34	-34	-33	-28	7				04-07		
8	60									E-1023	8	04-08	04-08		04-08	04-08	
9	70					-33	-35	-35	-34	-29	9	04-09	04-09		04-09		
10	80	20.4	410			-34	-36	-36	-35	-30	10				04-10		
11	80									E-1024	11	04-11	04-11		04-11	04-11	
12	90	20.2	411			-35	-37	-37	-36	-31	12	04-12	04-12	04-12	04-12	04-12	
13	100	21.0	412	SPRIGOT TEST - VALVE NOT CLOSED X		-36	-38	-38	-37	-32	13				04-13		
14	100	21.0								E-1025	14	04-14	04-14		04-14	04-14	
15	110					-37	-39	-39	-38	-33	15	04-15	04-15		04-15		
16	120	20.3	413			-38	-40	-40	-39	-34	16				04-16		
17	120									E-1026	17	04-17	04-17		04-17	04-17	
18	140	20.2	414			-39	-41	-41	-40	-35	18				04-18		
19	140									E-1022	19	04-19	04-19		04-19	04-19	
20	200	20.2	415			-40	-42	-42	-41	EDT3-36	20						
21	200									E-1028	21	04-21	04-21		04-21	04-21	
22	300	19.6	416			-41	-43	-43	EDT3-42	E-1029	22	04-22	04-22	04-22	04-22	04-22	04-22
23	500	19.2	417			NR3-42	-44	-44			23				04-23		
24	700	17.3	418				-45	-45			24						

Cruise: <i>EDZES</i>		Leg: <i>TRANSECT 2 E073</i>			Cast: <i>CTD #5</i>		Type: <i>0-1200M X0506C5DA7</i>		Station: <i>2375</i>								
Date: <i>07-JUL-2005</i>		Time: <i>2340</i>		Lat: <i>31 04.922</i>		Long: <i>66° 29.808</i>		Samplers:									
Date: <i>08-JUL-2005</i>		Time:		Lat:		Long:											
N #	depth	Niskdn temp	Oxygens			DIC	DIC	DOC	DON	Salts	Nut1	Nut2	Bact.	POC PON Vol=	PSI Vol=	HPLC Vol=	BBOP Chla
			O2 1	O2 2	O2 3												
1																	
2																	
3																	
4																	
5																	
6																	
7																	
8																	
9																	
10																	
11																	
12																	
13																	
14																	
15																	
16																	
17																	
18																	
19																	
20																	
21																	
22																	
23																	
24																	

2375

No

Cruise: <i>E07es</i>		Leg: <i>TRANSECT 3 E073</i>		Cast: <i>C2047</i>		Type: <i>0-700m X0506C7.DAT</i>		10 km MIDWAY 2316-2317-									
Date: <i>04-JUL-05</i>		Time: <i>0340</i>		Lat: <i>30 53.938</i>		Long: <i>66 23.689</i>		Samplers:									
Date: <i>04-JUL-05</i>		Time: <i>0625</i>		Lat: <i>30 53.676</i>		Long: <i>66 24.169</i>											
N #	depth	Niskin temp	Oxygens			DIC	DIC	DOC	DON	Salts	Nut1	Nut2	Bact.	POC PON Vol=	PSI Vol=	HPLC Vol=	BBOP Chla
			O21	O22	O23												
1																	
2																	
3																	
4																	
5																	
6																	
7																	
8																	
9																	
10																	
11																	
12																	
13																	
14																	
15																	
16																	
17																	
18																	
19																	
20																	
21																	
22																	
23																	
24																	

NO NC

[Handwritten scribble]

[Handwritten scribble]

Cruise: E07ES.		Leg: TRANSECT E073			Cast: CTD 4 IG		Type: 0-1200m XOS06 CLO.DAT STATION: WBCD/2321 EAST EDGE										
Date: 09-JUL-05		Time: 1008		Lat: 30° 54.193' N		Long: 65° 27.231' W		Samplers: ROD. DEB MEG, CRANE, COUNTRY, ELIZABETH STEVE, ELIZABETH									
Date: 09-JUL-05		Time: 1150		Lat: 30° 54.069' N		Long: 65° 27.359' W											
N #	depth	Niskrn temp	Oxygens			DIC	TocN	NO3	POCN	H4SiO4/REH	NISKEN #	THORIUM	BP/PCN DAT	VIRUS	SUGARS	FISH	DNA
			O21	O22	O23												
1	1	27.5	713														
2	1									2	E-1066	XOS06 10-02	XOS06 10-02		XOS06 10-02	XOS06 10-02	
3	20				-58	-62	-62		-50	3							
4	20									4	E-1067						
5	20	22.1	714		-57	-63	-63	-56	-51	5					10-05		
6	40									6	E-1068	10-06	10-06		10-06	10-06	
7	60	21.2	715		-60	-64	-64	-57	-52	7					10-07		
8	60									8	E-1069	10-08	10-08		10-08	10-08	
9	70	21.1	716		-61	-65	-65	-58	-53	9		10-09	10-09		10-09		
10	80	20.8	717		-62	-66	-66	-59	-54	10					10-10		
11	80									11	E-1070	10-11	10-11		10-11	10-11	
12	90	20.7	718		-63	-67	-67	-60	-55	12		10-12	10-12	10-12	10-12	10-12	
13	100		719		-64	-68	-68	-61	-56	13					10-13		
14	100									14	E-1071	10-14	10-14		10-14	10-14	
15	110				-65	-69	-69	-62	-57	15		10-15	10-15		10-15		
16	120				-66	-70	-70	-63	-58	16					10-16		
17	120									17	E-1072	10-17	10-17		10-17	10-17	
18	140	20.2	722		-67	-71	-71	-64	-59	18					10-18		
19	140									19	E-1073	10-19	10-19		10-19	10-19	
20	200	19.6	723		-68	-72	-72	-65	-60	20							
21	200									21	E-1074	10-21	10-21		10-21	10-21	
22	300	19.5	724		-69	-73	-73	-66		22	E-1075	10-22	10-22		10-22	10-22	
23	500									23					10-23		
24	700									24							

Cruise: F-00265		Leg: TRANSEQ 3 ED73		Cast: CTD #11		Type: 0-1200M X0506C11.DAT		STATION: WA2 / 2319									
Date: 09-JUL-05		Time: 1429		Lat: 30° 54.066N		Long: 65° 52.251W		Samplers: ROD, DEB, MEG, CRAIG, COURTNEY, ELISA									
Date: 07-JUL-05		Time: 1555		Lat: 30° 54.155N		Long: 65° 52.391W		SIOVE, ELIZABETH									
N #	depth	Niskrn temp	Oxygens			DIC BATS	DOC TOCN (MANSELL)	NO3	POCN (22) 32	HPLC /FEM	NICKEN	THORIUM	BP/FCM/ DAT	POM Vol	POM CARLSON Vol	POM DNA (21)	POM Chla
			O21	O22	O23												
1	1	27.7	301		WB3-71	WB3-71	ED73-76	ED73-67	ED73-61	1							X0506 11-01
2	1									2	E1076	X0506 11-02	X0506 11-02	X0506 11-02	X0506		
3	20				72	-77	-72		-62	3							11-03
4	20									4	E1077						
5	40	22.6	302		73	78	-78	① -68	-63	5							11-05
6	40									6	E1078	11-05	11-05	11-06	11-06		
7	60	21.7	303		74	-77	-77	② -69	-64	7							11-06
8 * Leak	60									8	E1079	11-08	11-08	11-08	11-08		
9	70	21.2	304		75	80	-80	③ -70	-65	9		11-09	11-09	11-09	11-09		
10	80	20.9	305		76	81	-81	④ -71	-66	10							
11	80									11	E1080	11-11	11-11	11-11	11-11		
12	90				77	82	-82	⑤ -72	-67	12		11-12	11-12	11-12	11-12		
13 * Leak	100		306		78	83	-83	⑥ -73	-68	13	↑	↑	↑	↑	↑		
14	100	20.6								14	E1081	11-14	11-14	11-14	11-14		
15	110	20.4	307		79	84	-84	⑦ -74	-69	15		11-15	11-15	11-15	11-15		
16	120	20.3	308		80	85	-85	⑧ -75	-70	16							
17	120									17	E1082	11-17	11-17	11-17	11-17		
18	140	20.3	309		81	86	-86	⑨ -76	-71	18							
19	140									19	E1083	11-19	11-19	11-19	11-19		
20	200	20.2	310		82	87	-87	⑩ -77	ED73-72	20							
21	200									21	E1084	11-21	11-21	11-21	11-21		
22	300	19.9	311		83	88	-88	⑪ -78		22	E1085	11-22	11-22	11-22	11-22		
23	500	19.2	312		WB3-84	89	-89	⑫ -79		23							
24	700					WB 411-90	-90			24							

Cruise		Leg		Cast		Type		WB 4 / 2517 'EC'									
Date		Time		Lat		Long		Samplers									
Date		Time		Lat		Long		1 NONG									
N #	depth	Niskin temp	Oxygens			DIC	DIC	DOC	DON	Salts	Nut1	Nut2	Bact.	POC PON Vol=	PSI Vol=	HPLC Vol=	BBOP Chla
			O2 1	O2 2	O2 3												
1																	
2																	
3																	
4																	
5																	
6																	
7																	
8																	
9																	
10																	
11																	
12																	
13																	
14																	
15																	
16																	
17																	
18																	
19																	
20																	
21																	
22																	
23																	
24																	

NON E

Cruise: EODJES		Leg: TRANSECT 3 EOT 3		Cast: CTD #14		Type: 0-1200m		Mid: 2316-2317 WBL'S									
Date: 10-JUL-05		Time: 0158		Lat: 30° 54.173N		Long: 66° 23.433N		Samplers: XOSOG C14.0A7									
Date: 10-JUL-05		Time: 03:05		Lat: 30° 54.047N		Long: 66° 23.615											
N #	depth	Niskin temp	Oxygens			DIC	DIC	DOC	DON	Salts	Nut1	Nut2	Bact.	POC PON Vol=	PSI Vol=	HPLC Vol=	BBOP Chla
			O21	O22	O23												
1																	
2																	
3																	
4																	
5																	
6																	
7																	
8																	
9																	
10																	
11																	
12																	
13																	
14																	
15																	
16																	
17																	
18																	
19																	
20																	
21																	
22																	
23																	
24																	

700M

Notes

15

Cruise: EDDIES			Leg: TRAVERSE ③ ED13			Cast: CTD #16			Type: 0-1200M X0506C16.DAT			STATION: WB(5) / 2316 NEW					
Date: 10-07-05		Time: 0630		Lat: 30° 54.100N		Long: 66° 29.98W		Samplers: ROD, DEB, MEA, CRAIG, COURTNEY, ELIZ-Steve									
Date: 10-07-05		Time: 0810		Lat: 30° 54.29N		Long: 66° 29.56W											
N #	depth	Niskdn temp	Oxygens			DIC	DIC HANSELL	DOC	DON	Salts	Nut1	Nut2	Bact.	POC	PSI	HPLC	BBOP
			O21	O22	O23	BATS	TOC/N	NUTS	POC/N	HALC	NiskeN	BRESSLER THORIUM	Vol=	Vol=	Vol=	Vol=	Chla
1	1	27.9	413			WB3-112	WB415-1 -121	ED13-121	ED13-104	ED13-97	1						
2	1										2	✓	X0506 16-02	X0506 16-02	X0506 16-02	X0506 16-02	X0506 16-02
3	20					-144	-122	-122		-98	3						
4	20										4	E	16-06				
5	40	22.2	414			-115	-123	-123		-105	5				16-05		
6	40										6	E	16-06	16-06		16-06	16-06
7	60	20.7	415			-116	-124	-124		-100	7				16-07		
8	60										8	E	16-08	16-08		16-08	16-08
9	70	20.5	416			-117	-125	-125		-101	9		16-09	16-09		16-09	
10	80	20.4	417			-118	-126	-126		-102	10				16-10		
11	80										11	E	16-11	16-11		16-11	16-11
12	90	20.3	418			-119	-127	-127	*1.92 -104	-103	12		16-12	16-12	16-12	16-12	16-12
13	100	20.2	419			-120	-128	-128		-104	13				16-13		
14	100										14	E	16-14	16-14		16-14	16-14
15	110	20.1	420			-121	-129	-129		-105	15		16-15	16-15		16-15	
16	120	20.2	421			-122	-130	-130		-106	16				16-16		
17	120										17	E	16-17	16-17		16-17	16-17
18	140					-123	-131	-131		-107	18				16-18		
19	140										19	E	16-19	16-19		16-19	16-19
20	200		422			-124	-132	-132		-108	20						
21	200										21	E	16-21	16-21		16-21	16-21
22	300	19.9	423			-125	-133	-133		-115	22	E	16-22	16-22	16-22	16-22	16-22
23	500 100	13.9	423			-126	-134	-134			23						
24	700 100	12.6	424				-135	-135			24						

100

Cruise: <u>EDDIES</u>		Leg: <u>TRANSECT 3 EDT3</u>			Cast: <u>CTD #19</u>			Type: <u>0-1200M</u>		XOSOGC19.DAT		STATION: <u>WB(7)/2132313 (WEST EGG)</u>					
Date: <u>10-Jul-05</u>		Time: <u>2224</u>		Lat: <u>30° 54.042</u>		Long: <u>67° 06.831</u>		Samplers: <u>Red, Bob, Meg, Craig, Courtney, Elisa, Steve, Elizabeth.</u>									
Date: <u>14-Jul-05</u>		Time: <u>0005</u>		Lat: <u>30° 54.102</u>		Long: <u>67° 06.962</u>											
N #	depth	Niskin temp	Oxygens			DIC	DIC	DOC	DON	Salts	Nut1	Nut2	Bact.	POC	PSI	HPLC	BBOP
			O21	O22	O23	BATS	HANWELL TOCN	NUTS	POCN	HPLC / REM	Nitrogen #			OP/REM/ DATE	Vol=	Vol=	Vol=
1	1	28.0	713			WB3-141	WB415-151	ED13-151	ED13-128	ED13-121	1						
2	1										2	E1147	X0506 17-02	X0506 19-02	X0506 19-02	X0506 19-02	
3	20					-142	-152	-152		-122	3						
4	20										4	E1148					
5	40	23.0	714			-143	-153	-153	-129	-123	5						
6	40										6	E1149	X0506 19-06	19-06	19-06	19-06	
7	60	21.9	715			-144	-154	-154	-130	-124	7						
8	60										8	E1150	19-08	19-08	19-08	19-08	
9	70	21.4	716			-145	-155	-155	-131	-125	9		19-09	19-09	19-09		
10	80	20.9	717			-146	-156	-156	-132	-126	10						
11	80										11	E1151	19-11	19-11	19-11	19-11	
12	90	20.8	718			-147	-157	-157	X0506 -133	-127	12		19-12	19-12	19-12	19-12	
13	100	20.5	719			-148	-158	-158	-134	-128	13						
14	100										14	E1152	19-14	19-14	19-14	19-14	
15	110	20.3	720			-149	-159	-159	-135	-129	15		19-15	19-15	19-15		
16	120					-150	-160	-160	-136	-130	16						
17	120										17	E1153	19-17	19-17	19-17	19-17	
18	140	X MISFIRE				-151	-161	-161	-137	-131	18						
19	140										19	E1154	19-19	19-19	19-19	19-19	
20	200	20.0	721			-152	-162	-162	-138	-132	20						
21	200										21	E1155	19-21	19-21	19-21	19-21	
22	300	19.9	722			-153	-163	-163	-139	-133	22	E1156	19-22	19-22	19-22	19-22	
23	500	18.9	723			-154	-164	-164			23						
24	700	16.9	724				-165	-165			24						

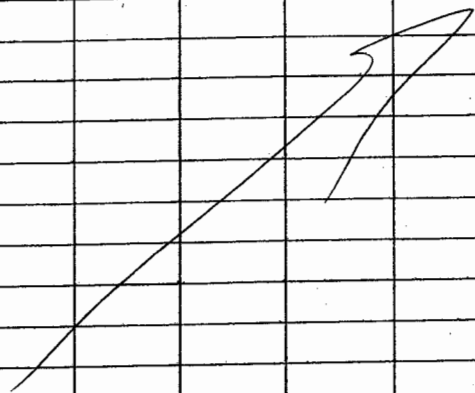
Cruise: <i>EDWES</i>		Leg: <i>MANSEET 3 E073</i>		Cast: <i>CTD#20</i>		Type: <i>0-700M X0506C20.DAT : MIDWAY 2315 → 2316.</i>		Samplers: <i>NONE.</i>									
Date: <i>11-JUL-05</i>		Time: <i>0328</i>		Lat: <i>30° 54.030</i>		Long: <i>66° 36.104</i>											
Date: <i>11-JUL-05</i>		Time: <i>0405</i>		Lat: <i>30° 53.799</i>		Long: <i>66° 36.140</i>											
N #	depth	Niskn temp	Oxygens			DIC	DIC	DOC	DON	Salts	Nut1	Nut2	Bact.	POC	PSI	HPLC	BBOP
			O2 1	O2 2	O2 3									Vol=	Vol=	Vol=	Chla
1																	
2																	
3																	
4																	
5																	
6																	
7																	
8																	
9																	
10																	
11																	
12																	
13																	
14																	
15																	
16																	
17																	
18																	
19																	
20																	
21																	
22																	
23																	
24																	

BOTTLES

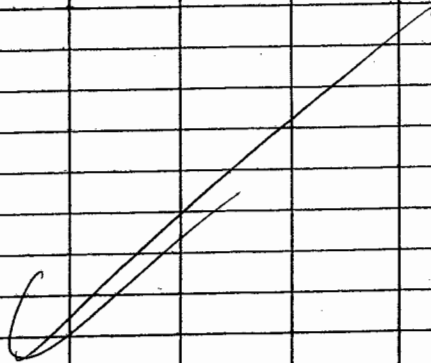
NO

6

Cruise: <i>EDZGS</i>		Leg: <i>EDZ</i>		Cast: <i>C70#21</i>		Type: <i>0-700m X0506C21.DAT</i>		WB(S) <i>2316</i>									
Date: <i>11-JUL-05</i>		Time: <i>0453</i>		Lat: <i>30° 53.991</i>		Long: <i>66° 29.786</i>		Samplers:									
Date: <i>11-JUL-05</i>		Time: <i>0537</i>		Lat: <i>30° 53.857</i>		Long: <i>66° 29.765</i>		<i>NONE</i>									
N #	depth	Niskn temp	Oxygens			DIC	DIC	DOC	DON	Salts	Nut1	Nut2	Bact.	POC PON Vol=	PSI Vol=	HPLC Vol=	BBOP Chla
			O2 1	O2 2	O2 3												
1																	
2																	
3																	
4																	
5																	
6																	
7																	
8																	
9																	
10																	
11																	
12																	
13																	
14																	
15																	
16																	
17																	
18																	
19																	
20																	
21																	
22																	
23																	
24																	



NONE



Cruise: <i>EM125</i>		Leg: <i>TRANSECTS E073</i>			Cast: <i>CTD#22</i>			Type: <i>CTD#22 XG506.C22.D17 W05 2316 0-700</i>									
Date: <i>11-07-05</i>		Time: <i>1004</i>		Lat: <i>30° 54.030 N</i>		Long: <i>66° 29.952</i>		Samplers: <i>NONE</i>									
Date: <i>11-07-05</i>		Time: <i>1045</i>		Lat: <i>30° 54.088 N</i>		Long: <i>66° 29.910</i>											
N #	depth	Niskin temp	Oxygens			DIC	DIC	DOC	DON	Salts	Nut1	Nut2	Bact.	POC PON Vol=	PSI Vol=	HPLC Vol=	BBOP Chla
			O2 1	O2 2	O2 3												
1																	
2																	
3																	
4																	
5																	
6																	
7																	
8																	
9																	
10																	
11																	
12																	
13																	
14																	
15																	
16																	
17																	
18																	
19																	
20																	
21																	
22																	
23																	
24																	

BOTTLES

NO

2

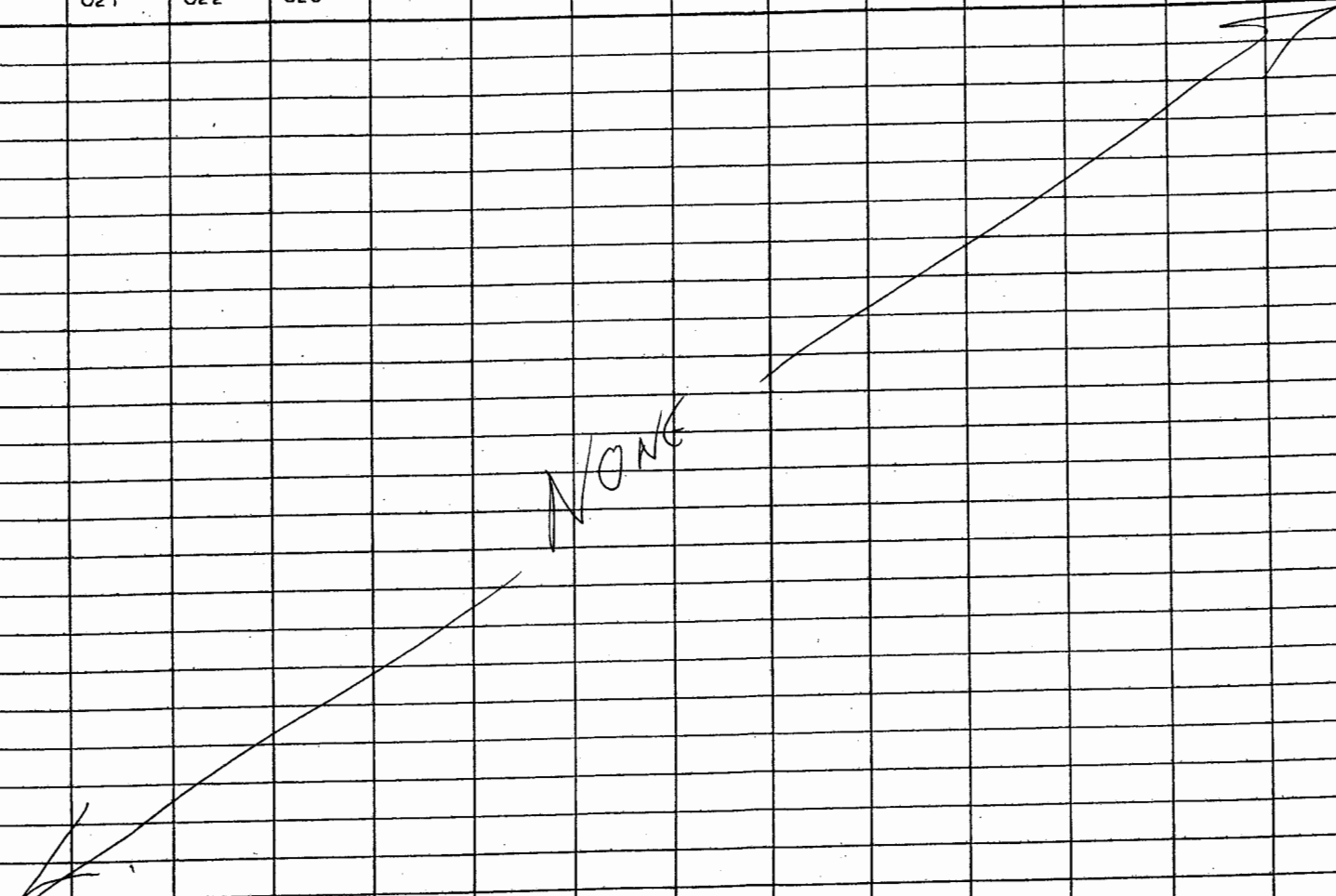
Cruise: EDITES			Leg: TRANSECT (3) EDT (3)			Cast: C70423			Type: 0-1200M X0506C23.DAT			STATION W610/2375						
Date: 11 JUL 05			Time: 1212		Lat: 31° 04' 766" N		Long: 66° 29' 285" W		Samplers: R. DEB, M.F. CRAIG, COURTNEY, ELIS STEVE									
Date: 11 JUL 05			Time: 1348		Lat: 31° 04' 948" N		Long: 66° 29' 645" W											
N #	depth	Niskrn temp	Oxygens			DIC BATS.	DOC (VANSEL)	DIN NH47S	DIP POCN	DIP HPLC PCM	NISKEN	BIOSOLAR THORIUM	POM POM	CARLSON VIRUS	HPLC DNA	BBOP Chla	BBOP CDOM	
			O21	O22	O23													
1	1	28.2	801							4		BP/PCM DAPZ	VIRUS	FISH	DNA	X0506 23-01	JJ13	
2	1									2	E1157	X0506 23-02	X0506 23-02	X0506 23-02	X0506 23-02	X0506 23-02	JJ14	
3	20	24.5	802							3								
4	20									4	E1158							
5	40		802							5							X0506 23-03	JJ15
6	40	22.9								6	E1159	23-06	23-06	23-06	23-06	X0506 23-04	JJ16	
7	60	21.0	803							7								
8	60									8	E1160	23-08	23-08	23-08	23-08			
9	70	20.7	804							9		23-09	23-09	23-09				
10	80	20.6	805							10								
11	80									11	E1161	23-11	23-11	23-11	23-11			
12	90	20.6	806							12		23-12	23-12	23-12	23-12			
13	100	20.5	807							13								
14	100									14	E1162	23-14	23-14	23-14	23-14			
15	110	20.3	808							15		23-15	23-15	23-15				
16	120	20.3	809							16								
17	120									17	E1163	23-17	23-17	23-17	23-17			
18	140	20.2	810							18								
19	140									19	E1164	23-19	23-19	23-19	23-19			
20	200	20.1	811							20								
21	200									21	E1165	23-21	23-21	23-21	23-21			
22	300	19.9	812							22	E1166	23-22	23-22	23-22	23-22			
23	500									23								
24	700									24								

Cruise: EDDIES		Leg: TRANSECT 3 ED73		Cast: CTD #24		Type: 0-1200M XOSOG24 STATION NB(5) / 2434											
Date: 11-JUL-05		Time: 1824		Lat: 31 15.633		Long: 66 29.724'		Samplers: BOO, DER, MEA, CRAZE, COURTNEY, EISEN									
Date: 11-JUL-05		Time: 2005		Lat: 30 15.616		Long: 66 29.829.											
N #	depth	Niskln temp	Oxygens			BATS	TOEN HANSELL	NU28	POCN	#PLC FEM	Niskln #	TAGZUM	DATE	BOO PON	MEAS CARLSON	MIRA	ODDP
			O21	O22	O23												
1	1	28.3	813			H83-169	WALS-I -181	E073-181	E073-182	E073-185	1						
2	1										2	E1173	XOSOG 24-02	XOSOG 24-02	XOSOG 24-02	XOSOG 24-02	
3	20					H83-170	-182	-182		-146	3						
4	20										4	E1174	24-05				
5	40	24.0	814			-171	-183	-183	-153	-147	5						
6	40										6	E1175	24-06	24-06	24-06	24-06	
7	60	22.2	815			-172	-184	-184	-154	-148	7						
8	60										8	E1176	24-08	24-08	24-08	24-08	
9	70	21.8	816			-173	-185	-185	-155	-149	9		24-09	24-09	24-09		
10	80	21.5	817			-174	-186	-186	-156	-150	10						
11	80										11	E1177	24-11	24-11	24-11	24-11	
12	90	21.3	818			-175	-187	-187	-157	-151	12		24-12	24-12	24-12	24-12	
13	100	21.0	819			-176	-188	-188	-158	-152	13						
14	100										14	E1178	24-14	24-14	24-14	24-14	
15	110	20.9	820			-177	-189	-189	-159	-153	15		24-15	24-15	24-15		
16	120	20.9	821			-178	-190	-190	-160	-154	16						
17	120										17	E1179	24-17	24-17	24-17	24-17	
18	140	20.5	822			-179	-191	-191	-161	-155	18						
19	140										19	E1180	24-19	24-19	24-19	24-19	
20	200	20.4	823			-180	-192	-192	-162	-156	20						
21	200										21	E1181	24-21	24-21	24-21	24-21	
22	300					-181	-193	-193	-163		22	E1182	24-22	24-22	24-22	24-22	
23	500	19.6	824				-194	-194			23						
24	700						-195	-195			24						

Cruise: EDDIES		Leg: TRANSECT 3 ED73		Cast: CTD# 25		Type: 0-1200M		X0506C25.DAT		STATION: # W88 / 2552 N Bougainville							
Date: 11-07-05		Time: 23-42		Lat: 31 37.218		Long: 66 30.129		29.805		Samplers: ROD, DEB, MGR							
Date: 12-07-05		Time: 00-23		Lat: 31 37.355		Long: 66 30.129		CRAC, COURTNEY, ELISE		STAND							
N #	depth	Niskin temp	Oxygens			DIC	DIC	POC	DOC	Salts	Nut1	Nut2	Bact.	POC PON	PSI	HPLC	BBOP
			O21	O22	O23	BATS	TOCN HANSELL	NUZS	POCN	HPLC REM	Nitrogen	Silicate	Turbidity		Vol=	Vol=	Vol=
		28.3															
		17.3	301														
1	1					W83-182	W844-196	ED73-196	ED73-164	ED73-187	1		BA/REM DAPPZ	Virus	PSA	DNA	
2	1										2	E	X0506 25-02	X0506 25-02	X0506 25-02	X0506 25-02	
3	20	25.5	302			-183	-197	-197		-158	3						
4	20										4	E					
5	40		303			-184	-198	-198	-165	-159	5						
6	40	23.9									6	F	25-06	25-06	25-06	25-06	
7	60	23.2	303			-185	-199	-199	-166	-160	7						
8	60										8	F	25-08	25-08	25-08	25-08	
9	70	21.8	304			-186	-200	-200	-167	-161	9		25-09	25-09	25-09		
10	80	21.5	305			-187	-201	-201	-168	-162	10						
11	80										11	E	25-11	25-11	25-11	25-11	
12	90	21.6	306			-188	-202	-202	-169	-163	12		25-12	25-12	25-12	25-12	
13	100	21.1	307			-189	-203	-203	-170	-164	13						
14	100										14	F	25-14	25-14	25-14	25-14	
15	110	20.8	308			-190	-204	-204	-171	-165	15		25-15	25-15	25-15		
16	120	20.8	309			-191	-205	-205	-172	-166	16						
17	120										17	E	25-17	25-17	25-17	25-17	
18	140	20.5	310			-192	-206	-206	-173	-167	18						
19	140										19	E	25-19	25-19	25-19	25-19	
20	200	20.2	311			-193	-207	-207	-174	-168	20						
21	200										21	E	25-21	25-21	25-21	25-21	
22	300	20.9				-194	-208	-208	-175		22	E	25-22	25-22	25-22	25-22	
23	500					-195	-209	-209			23						
24	700	17.3	312				-210	-210			24						

Cruise: EDDIES		Leg: TRANSECT ③ E07 ③		Cast: 070A 26		Type: 0-200M X0506C26.DAT. STATION MIDWAY 2316-2251											
Date: 12-JUL-05		Time: 0615		Lat: 30° 48.589		Long: 66 29.894		Samplers: NONE									
Date: 12-JUL-05		Time: 0635		Lat: 30° 48.482		Long: 66 29.983											
N #	depth	Niskin temp	Oxygens			DIC	DIC	DOC	DON	Salts	Nut1	Nut2	Bact.	POC PON Vol=	PSI Vol=	HPLC Vol=	BBOP Chla
			O2 1	O2 2	O2 3												
1																	
2																	
3																	
4																	
5																	
6																	
7																	
8																	
9																	
10																	
11																	
12																	
13																	
14																	
15																	
16																	
17																	
18																	
19																	
20																	
21																	
22																	
23																	
24																	

NONE



Cruise: EDD765		Leg: TRANSCT (3) ED73		Cast: C70427		Type: 0-200M X0506C27.DAT		Station No (1) 2257									
Date: 12-JUL-05		Time: 0710		Lat: 30° 43.191		Long: 66° 27.877		Samplers: NONG									
Date: 12-JUL-05		Time: 0730		Lat: 30° 43.135		Long: 66° 29.886											
N #	depth	Niskn temp	Oxygens			DIC	DIC	DOC	DON	Salts	Nut1	Nut2	Bact.	POC PON Vol=	PSI Vol=	HPLC Vol=	BBOP Chla
			O21	O22	O23												
1																	
2																	
3																	
4																	
5																	
6																	
7																	
8																	
9																	
10																	
11																	
12																	
13																	
14																	
15																	
16																	
17																	
18																	
19																	
20																	
21																	
22																	
23																	
24																	

NONG

62

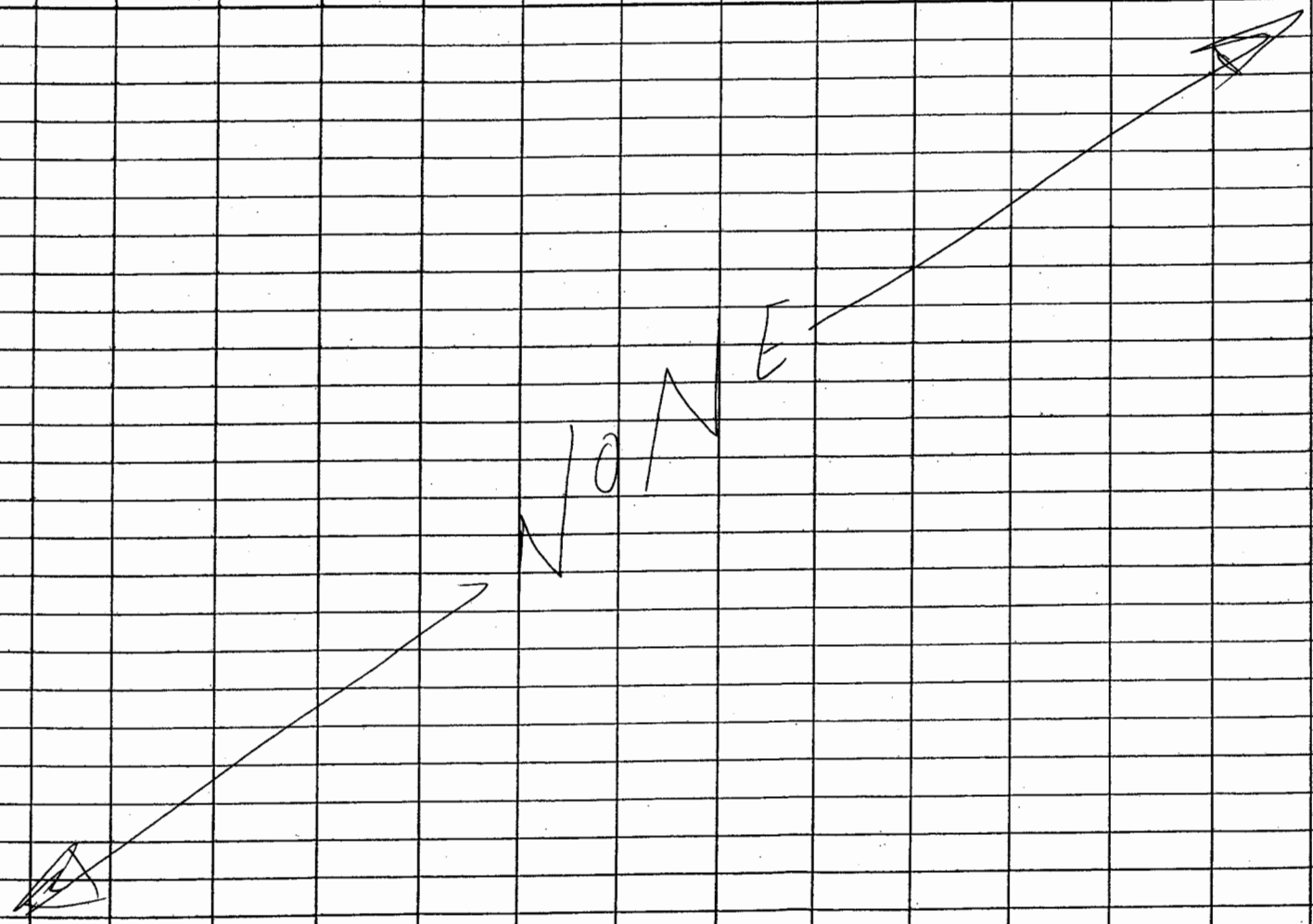
Cruise: <i>ED03</i>			Leg: <i>TRANSCT 3 ED03</i>			Cast: <i>CTD #2B</i>			Type: <i>0-200m X0506C28</i>			Station: <i>NR 11/2257</i>				
Date: <i>12-Jul-05</i>		Time: <i>1402</i>		Lat: <i>30° 43.688N</i>		Long: <i>66° 29.258</i>		Samplers: <i>ROA, D63, MGG, CRAIG, COURTNEY, ELIZA STAVE.</i>								
Date: <i>12-Jul-05</i>		Time: <i>1540</i>		Lat: <i>30° 43.552N</i>		Long: <i>66° 29.896</i>										
N #	depth	Niskin temp	Oxygens			DIC	BIG	BOB	BOB	Salts	Nitr	Thom	BIOB	BBOP	CMB	EDOM ?
			O21	O22	O23	BATS	TORN HANSEL	NUTS	POCN	HPLC PEM						
1	1	28.3	313			<i>NR3-196</i>	<i>NR346-1 211</i>	<i>ED03-211</i>	<i>ED03-176</i>	<i>ED03-169</i>	1					<i>X0506 28-01</i>
2	1										2	<i>E1201</i>	<i>X0506 28-02</i>	<i>X0506 28-02</i>	<i>X0506 28-02</i>	
3	20					<i>-197</i>	<i>212</i>	<i>-212</i>		<i>-180</i>	3					<i>28-02</i>
4	20										4	<i>E1202</i>				
5	40	22.2	314			<i>-198</i>	<i>213</i>	<i>-213</i>	<i>-177</i>	<i>-171</i>	5					<i>28-03</i>
6	40										6	<i>E1203</i>	<i>28-06</i>	-	-	
7	60	21.2	315			<i>-199</i>	<i>214</i>	<i>214</i>	<i>-178</i>	<i>-172</i>	7					<i>28-04</i>
8	60										8	<i>E1204</i>	<i>28-08</i>	-	-	
9	70	21.0	316			<i>-200</i>	<i>215</i>	<i>215</i>	<i>-179</i>	<i>-173</i>	9		<i>28-09</i>	-	-	
10	80	20.8	317			<i>-201</i>	<i>216</i>	<i>216</i>	<i>-180</i>	<i>-174</i>	10					
11	80										11	<i>E1205</i>	<i>28-11</i>	-	-	
12	90	20.7	318			<i>-202</i>	<i>217</i>	<i>217</i>	<i>(1.142) -181</i>	<i>-175</i>	12		<i>28-12</i>	-	-	
13	100	20.8	319			<i>-203</i>	<i>218</i>	<i>218</i>	<i>-182</i>	<i>-176</i>	13					
14	100										14	<i>E1206</i>	<i>28-14</i>	-	-	
15	110	20.6	320			<i>-204</i>	<i>219</i>	<i>219</i>	<i>-183</i>	<i>-177</i>	15		<i>28-15</i>	-	-	
16	120	20.6	321			<i>-205</i>	<i>220</i>	<i>220</i>	<i>-184</i>	<i>-178</i>	16					
17	120										17	<i>E1207</i>	<i>28-17</i>	-	-	
18	140					<i>-206</i>	<i>221</i>	<i>221</i>	<i>-185</i>	<i>-179</i>	18			<i>du</i>	<i>du</i>	
19	140	21.2									19	<i>E1208</i>	<i>28-19</i>	-	-	
20	200	20.3	322			<i>-207</i>	<i>222</i>	<i>222</i>	<i>-186</i>	<i>-180</i>	20					
21	200										21	<i>E1209</i>	<i>28-21</i>	-	-	
22	300	20.2	323			<i>-208</i>	<i>223</i>	<i>223</i>	<i>(1.51) -187</i>		22	<i>E1210</i>	<i>28-22</i>	-	-	
23	500					<i>-209</i>	<i>224</i>	<i>224</i>			23					
24	700	18.5	324				<i>225</i>	<i>225</i>			24					

Cruise: EDUJES		Leg: TRANSER 3 EOP3		Cast: CTD # 29		Type: 07200M XOSOGCCT. DAT		WB14. NO OCE #									
Date: 12-JULY-05		Time: 1742		Lat: 30° 37.964		Long: 66° 36.218		Samplers: ROO, DEB, ME9, STEVE, CRAIG, COURTNEY, ELISA									
Date: 12-JULY-05		Time: 1925		Lat: 30° 37.942		Long: 66° 36.156											
N #	depth	Niskin temp	Oxygens			DIC	DIC	DOC	DON	Salts	Nut1	Nut2	Bact.	POC PON	PSI	HPLC	BBOP
			O21	O22	O23	RAZS	TOCN (HANSEL)	NUTS	(20) POCN	HPLC (PCM)	Nitrogen	THEODON	BP/PCM DAT	Vol=	Vol=	Vol=	Chla
1	1	28.3	401			WB3-210	WB412-1 226	EDUJES	E073-181	E073-181	1						
2	1										2	E1211	XOSOG 28-02				
3	20									-182	3						
4	20										4	E1212					
5	40									-189	5						
6	40										6	Z1213	28-04				
7	60	21.2	402			WB3-211	229	* E073-226	-190	-184	7						
8	60										8	E1214	28-08				*XOSOG 28-08
9	70										9		28-09				28-09
10	80	20.7	403			WB2-212	231	* -228	-192	-186	10						
11	80										11	E1215	28-11				*28-11
12	90	21.1	908 404			WB3-213	232	* -229	^{25L} -193	-187	12		28-12				*28-12
13	100	20.6	405			WB5-214	233	* -230	-194	-188	13						
14	110										14	E1216	28-14				*28-14
15	110	20.4	406			WB3-215	234	* -231	-191	-189	15		28-15				28-15
16	120	20.5	407			-216	235	* -232	-196	-190	16						
17	120										17	E1217	28-17				*28-17
18	140					-217	236	* -233	-192	-191	18						
19	140 160										19	E1218	28-19				
20	200	20.3	408			-218	237	* -234	-198	-192	20						
21	200										21	E1219	28-21				
22	300					-219	238	* -235	-199		22	E1220	28-22				
23	500						239				23						
24	700						240				24						

8/13

Cruise: <u>EDGES</u>		Leg: <u>Transect B E073</u>		Cast: <u>CTDH 31</u>		Type: <u>0-1200M : X0506L31.DAT : STATION WB(16)</u>											
Date: <u>12 July 05</u>		Time: <u>22 58</u>		Lat: <u>30 37.876</u>		Long: <u>66 29.888</u>		Samplers: <u>None</u>									
Date: <u>13-Jul-06</u>		Time: <u>00:02</u>		Lat: <u>30 37.720</u>		Long: <u>66 29.851</u>											
N #	depth	Niskin temp	Oxygens			DIC	DIC	DOC	DON	Salts	Nut1	Nut2	Bact.	POC PON Vol=	PSI Vol=	HPLC Vol=	BBOP Chla
			O21	O22	O23												
1																	
2																	
3																	
4																	
5																	
6																	
7																	
8																	
9																	
10																	
11																	
12																	
13																	
14																	
15																	
16																	
17																	
18																	
19																	
20																	
21																	
22																	
23																	
24																	

NONE



Cruise: <i>ED013</i>		Leg: <i>TRANSECT 3 ED013</i>			Cast: <i>C70# 83</i>		Type: <i>0-1200M X0506C.33.DAT. STATION NB(2)/2198</i>										
Date: <i>13-JUL-05</i>		Time: <i>1545</i>		Lat: <i>30 32.567</i>		Long: <i>166 29.780W</i>		Samplers: <i>NONE</i>									
Date: <i>6</i>		Time:		Lat:		Long:		Nut1	Nut2	Bact.	POC PON Vol=	PSI Vol=	HPLC Vol=	BBOP Chla			
N #	depth	Niskn temp	Oxygens			DIC	DIC	DOC <i>(Biomass)</i> Thorium	DON	Salts	Nut1	Nut2	Bact.	POC PON Vol=	PSI Vol=	HPLC Vol=	BBOP Chla
			O2 1	O2 2	O2 3												
1	1																
2	20																
3	40																
4	60																
5	80																
6	100																
7	120																
8	140																
9	160																
10	180																
11	200																
12	225																
13	250																
14	275																
15	300																
16	325																
17	350																
18	375																
19	400																
20																	
21																	
22																	
23																	
24																	

✓ Lost CONTAINER WITH CTD
 @ 1150M on URCAST.
 Bring Back to Surface
 NO BOTTLE RINES.

Cruise: <i>EDDIES</i>		Leg: <i>TRANSAT 3 EDDIES</i>			Cast: <i>C70 #34</i>		Type: <i>050634.DAT</i> <i>WB12/2198</i>										
Date: <i>13 JUL 05</i>		Time: <i>1820</i>		Lat: <i>30° 32.657</i>		Long: <i>66° 29.622 W</i>					Samplers:						
Date: <i>13 JUL 05</i>		Time: <i>1937</i>		Lat: <i>30°</i>		Long:											
N #	depth	Niskn temp	Oxygens			DIC	DIC	DOC	DON	Salts	Nut1	Nut2	Bact.	POC PON Vol=	PSI Vol=	HPLC Vol=	BBOP Chla
			O2 1	O2 2	O2 3												
1																	
2																	
3																	
4																	
5																	
6																	
7																	
8																	
9																	
10																	
11																	
12																	
13																	
14																	
15																	
16																	
17																	
18																	
19																	
20																	
21																	
22																	
23																	
24																	

NO DATA

LOST CONTACT @ 75m.

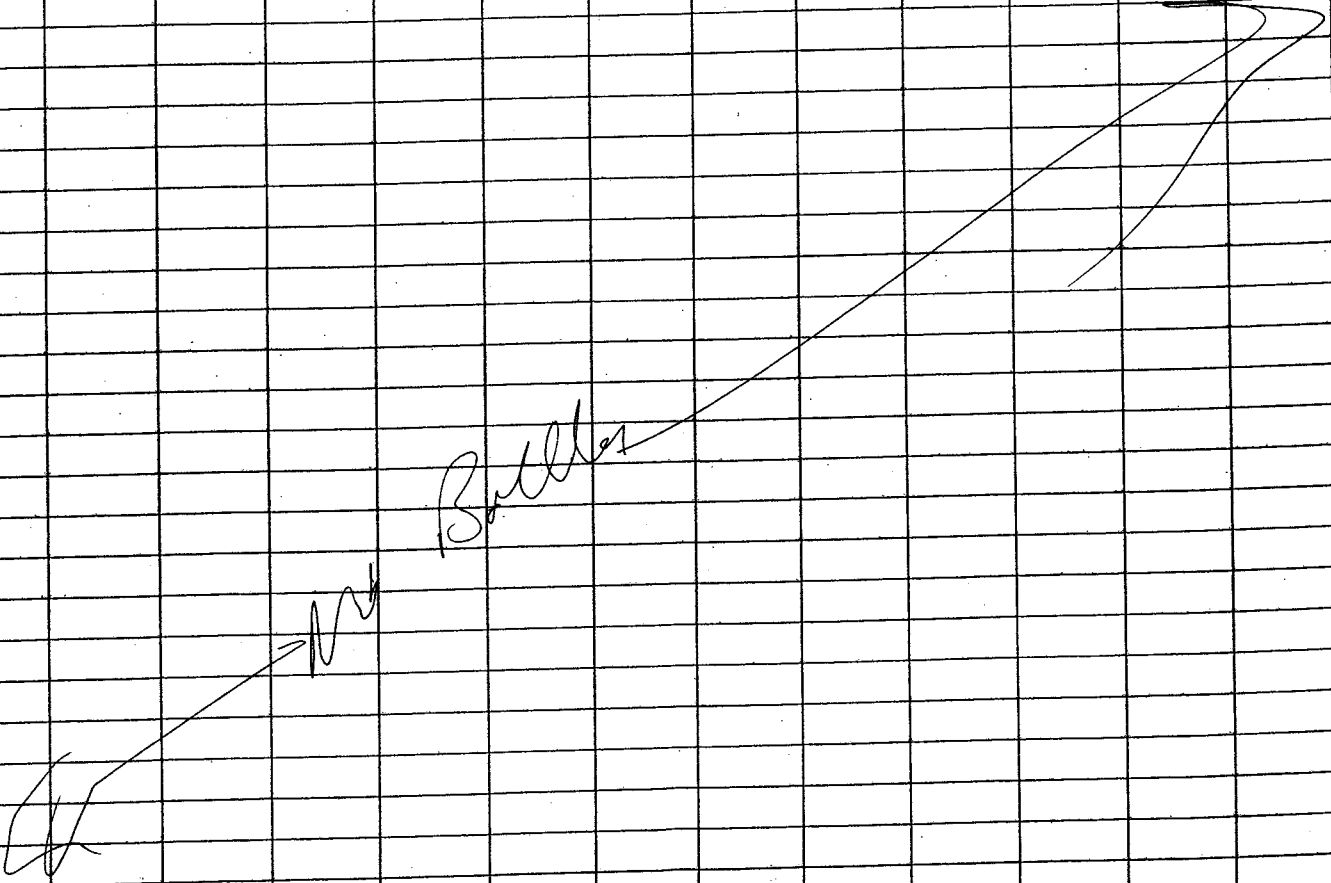
[Handwritten signature]

Cruise: <u>ED07ES</u>		Leg: <u>FRANSETZ 3</u>		ED03		Cast: <u>CTD#35</u>		Type: <u>0-1200M</u>		<u>X0506 CBS.DAT</u>		<u>Station NB13/2080</u>					
Date: <u>13-JUL-05</u>		Time: <u>21-06</u>		Lat: <u>30° 10.420N</u>		Long: <u>66° 29.813W</u>		Samplers: <u>ROD, DEB, MEG</u> <u>CRISTA, COURTNEY, ELISA</u> <u>STEVE</u>									
Date: <u>13-JUL-05</u>		Time: <u>22-08</u>		Lat: <u>30° 11.188N</u>		Long: <u>66° 30.103W</u>											
N #	depth	N skin temp	Oxygens			DIC	DIC	DOC	DON	Salts	Nut1	Nut2	Bact.	POC PON Vol=	PSI Vol=	HPLC Vol=	BBOP Chla
			O21	O22	O23	KAT5	TOCN (transf)	NUT5	POCN (2e)	MPLR PREM	Nitrogen	Thorium	BP/REM DATZ	Vol=	Vol=	Vol=	
1	1	28.5	701			NB3-234	WALW-1 256	ED03 -281	ED03 -212	ED03 -205	1						
2	1										2	E1248	X0506 35-02	X0506 35-02	X0506 35-02	X0506 35-02	
3	20	25.8	702			-235	257	-252		-206	3						
4	20										4	E1249					
5	40		703			-236	258	-253	-213	-207	5						
6	60	21.9									6	E1250	35-06	35-06	35-06	35-06	
7	60	21.6	703			-237	259	-254	-214	-208	7						
8	60										8	E1251	35-08	35-08	35-08	35-08	
9	70	21.3	704			-238	260	-255	-215	-209	9		35-09	35-09	35-09		
10	80	21.0	705			-239	261	-256	216	-210	10						
11	80										11	E1252	35-11	35-11	35-11	35-11	
12	90	20.9	706			-240	262	-257	-217	*1022 -211	12		35-12	35-12	35-12	35-12	
13	100	20.7	707			-241	263	-258	218	-212	13						
14	100										14	E1253	35-14	35-14	35-14	35-14	
15	110	20.5	708			-242	264	-259	-219	-213	15		35-15	35-15	35-15	35-15	
16	120	20.5	709			-243	265	-260	-220	-214	16						
17	120										17	E1254	35-17	35-17	35-17	35-17	
18	140	20.4	710			-244	266	-261	-221	-215	18		BF				
19	160										19	E1255	35-19	35-19	35-19	35-19	
20	200	20.2	711			-245	267	-262	-222	-216	20						
21	200	20.9									21	E1256	35-21	35-21	35-21	35-21	
22	300	↓				-246	268	-263	-223		22	E1257	35-22	35-22	35-22	35-22	
23	500	19.5	712			-247	269	-264			23						
24	700					-248	270	-265			24						

Cruise: <i>EMMES</i>		Leg: <i>TRANSIT 3 E073</i>			Cast: <i>CTD #39</i>		Type: <i>0-1200m KOSOCC39-DIT</i>		WB: <i>(17)</i> , <i>10km NNE of MB14</i>								
Date: <i>14-JUL-06</i>		Time: <i>1958</i>	Lat: <i>30 37.931</i>		Long: <i>66 42.418</i>		Samplers: <i>None</i>										
Date: <i>11</i>		Time: <i>2100</i>	Lat: <i>30 37.587</i>		Long: <i>66 42.161</i>												
N #	depth	Niskin temp	Oxygens			DIC	DIC	DOC	DON	Salts	Nut1	Nut2	Bact.	POC PON Vol=	PSI Vol=	HPLC Vol=	BBOP Chla
			O2 1	O2 2	O2 3												
1																	
2																	
3																	
4																	
5																	
6																	
7																	
8																	
9																	
10																	
11																	
12																	
13																	
14																	
15																	
16																	
17																	
18																	
19																	
20																	
21																	
22																	
23																	
24																	

NONE

Cruise: <i>EDDIES</i>		Leg: <i>Transect E073</i>		Cast: <i>0-1200m</i>		Type: <i>X0506C60.0</i>		Pro ⁿ Recovery									
Date: <i>16-JUL-05</i>		Time: <i>22.52</i>		Lat: <i>30° 42.110N</i>		Long: <i>66° 39.653</i>		Samplers:									
Date: <i>16-JUL-05</i>		Time:		Lat:		Long:		Nut1	Nut2	Bact.	POC PON Vol=	PSI Vol=	HPLC Vol=	BBOP Chla			
N #	depth	Niskin temp	Oxygens			DIC	DIC	DOC	DON	Salts	Nut1	Nut2	Bact.	POC PON Vol=	PSI Vol=	HPLC Vol=	BBOP Chla
			O2 1	O2 2	O2 3												
1																	
2																	
3																	
4																	
5																	
6																	
7																	
8																	
9																	
10																	
11																	
12																	
13																	
14																	
15																	
16																	
17																	
18																	
19																	
20																	
21																	
22																	
23																	
24																	



Cruise: <i>EP228</i>		Leg: <i>TRANSCT 3 EDT 3</i>		Cast: <i>C10#44</i>		Type: <i>XOSGCKI-DAT</i>		Pits Argy B-Recovery									
Date: <i>15 Jul-08</i>		Time: <i>02.57</i>		Lat: <i>30° 29.02'N</i>		Long: <i>66° 50.72'W</i>		Samplers: <i>NONE</i>									
Date: <i>15 Jul-08</i>		Time: <i>03.35</i>		Lat: <i>30° 29.367'N</i>		Long: <i>66° 50.512'W</i>											
N #	depth	Niskin temp	Oxygens			DIC	DIC	DOC	DON	Salts	Nut1	Nut2	Bact.	POC PON Vol=	PSI Vol=	HPLC Vol=	BBOP Chla
			O2 1	O2 2	O2 3												
1																	
2																	
3																	
4																	
5																	
6																	
7																	
8																	
9																	
10																	
11																	
12																	
13																	
14																	
15																	
16																	
17																	
18																	
19																	
20																	
21																	
22																	
23																	
24																	

NO

Bottom

Cruise: <i>EMANES</i>			Leg: <i>TRANSCT 3 ED73</i>			Cast: <i>C704112</i>			Type: <i>0-200m X060642-D12</i>			<i>High 41</i>					
Date: <i>15 JUL 05</i>			Time: <i>0555</i>		Lat: <i>30 49.738N</i>		Long: <i>66° 47.835W</i>		Samplers:								
Date: <i>15 JUL 05</i>			Time: <i>0637</i>		Lat: <i>30 49.914N</i>		Long: <i>66° 47.325W</i>										
N #	depth	Niskin temp	Oxygens			DIC	DIC	DOC	DON	Salts	Nut1	Nut2	Bact.	POC PON Vol=	PSI Vol=	HPLC Vol=	BBOP Chla
			O2 1	O2 2	O2 3												
1																	
2																	
3																	
4																	
5																	
6																	
7																	
8																	
9																	
10																	
11																	
12																	
13																	
14																	
15																	
16																	
17																	
18																	
19																	
20																	
21																	
22																	
23																	
24																	

None

