



DRAWING NUMBER

DRAWING NUMBER

9171-102 Sht 1

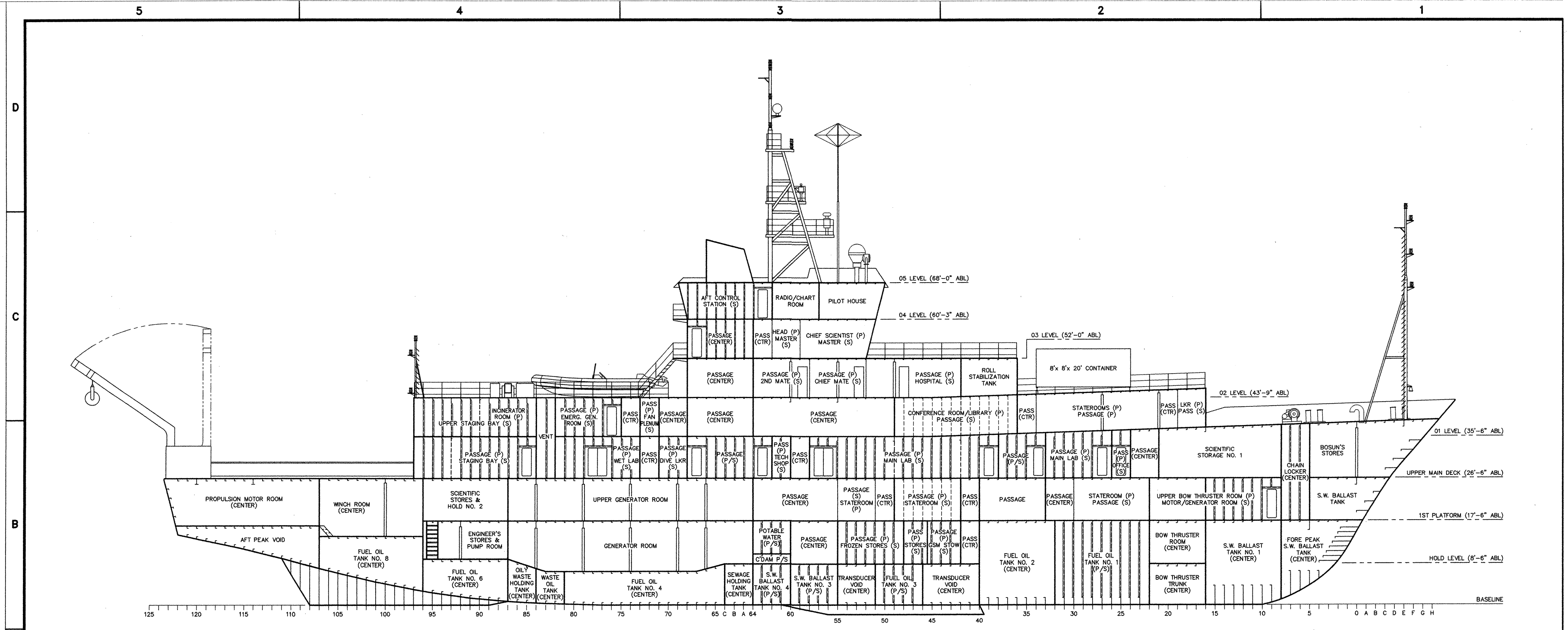
DRAWING NUMBER

PLAN HOLD CORPORATION • IRVINE, CALIFORNIA  
RECORDING NUMBER 07348

PLAN HOLD CORPORATION • IRVINE, CALIFORNIA  
RECORDING NUMBER 07348

R/V Thomas G. Thompson  
University of Washington

PLAN HOLD CORPORATION • IRVINE, CALIFORNIA  
RECORDING NUMBER 07348



NOTE: 1/2 SIZE PRINT

REVISIONS		REFERENCES	GENERAL NOTES	UNIVERSITY OF WASHINGTON SEATTLE, WASHINGTON		
REV	ZONE	DESCRIPTION	BY	DATE		
		1. USN DWG NO. 6607827, REV F: OUTBOARD PROFILE P/S 2. USN DWG NO. 6607828, REV D: INBOARD PROFILE P/S 3. USN DWG NO. 6607829, REV F: GENERAL ARRANGEMENT - DOUBLE BOTTOM, HOLD, & TANK TOP 4. USN DWG NO. 6607831, REV E: GENERAL ARRANGEMENT - 01 LEVEL & 02 LEVEL 5. USN DWG NO. 6607832, REV E: GENERAL ARRANGEMENT - 03 LEVEL, 04 LEVEL, & 05 LEVEL	1. THIS DRAWING DEVELOPED FROM REFERENCES 1 THROUGH 5, UPDATED TO REFLECT POST-DELIVERY MODIFICATIONS TO VESSEL.	<b>R/V THOMAS G. THOMPSON</b>  INBOARD PROFILE  <b>THE GLOSTEN ASSOCIATES, Inc.</b> <small>CONSULTING ENGINEERS SERVING THE MARINE COMMUNITY            600 Mutual Life Building • 605 First Avenue • Seattle, Washington 98104-2224</small>		
				AutoCAD File Name 71102-1.DWG Plotting Scale 1=96	Drawn by CWK Scale 1/8"=1'-0"	Checked by WAT Date 10/21/92 Drawing No. 9171-102 Sheet 1 of 1

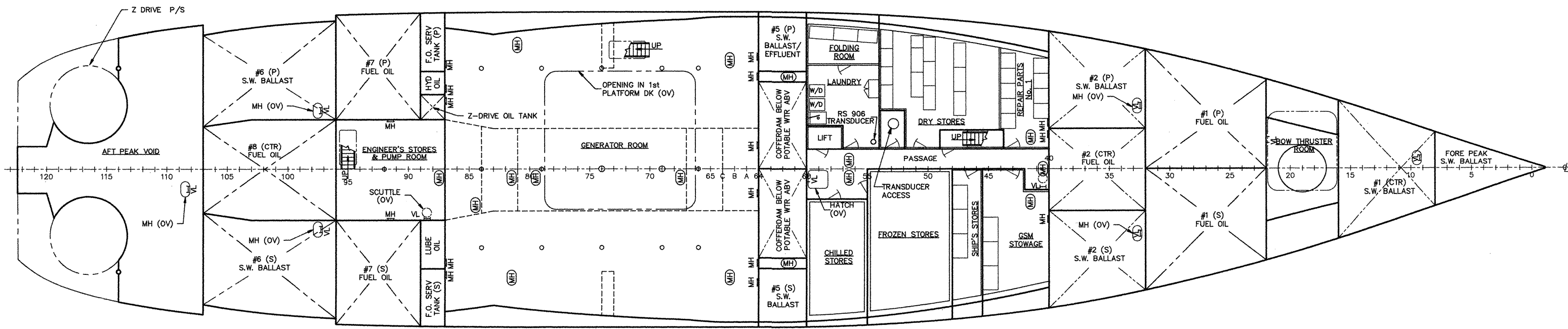
DRAWING NUMBER

DRAWING NUMBER

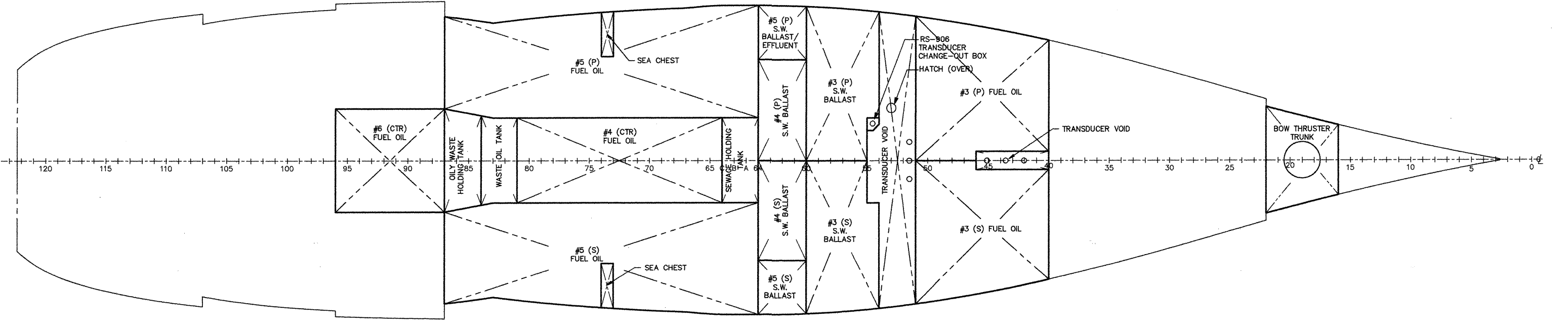
9171-103 Sht 1

DRAWING NUMBER

PLANNING CORPORATION • IRVINE, CALIFORNIA  
R/V Thomas G. Thompson  
University of Washington  
CONSULTING ENGINEERS SERVING THE MARINE COMMUNITY  
600 Mutual Life Building • 605 First Avenue • Seattle, Washington 98104-2224



HOLD & TANK TOP PLAN



DOUBLE BOTTOM PLAN

NOTE: 1/2 SIZE PRINT

REVISIONS				REFERENCES				GENERAL NOTES				
REV	ZONE	DESCRIPTION	BY	DATE								
					1. USN DWG NO. 6607827, REV F: OUTBOARD PROFILE P/S 2. USN DWG NO. 6607828, REV D: INBOARD PROFILE P/S 3. USN DWG NO. 6607829, REV F: GENERAL ARRANGEMENT - DOUBLE BOTTOM, HOLD, & TANK TOP 4. USN DWG NO. 6607831, REV E: GENERAL ARRANGEMENT - 01 LEVEL & 02 LEVEL 5. USN DWG NO. 6607832, REV E: GENERAL ARRANGEMENT - 03 LEVEL, 04 LEVEL, & 05 LEVEL				1. THIS DRAWING DEVELOPED FROM REFERENCES 1 THROUGH 5, UPDATED TO REFLECT POST-DELIVERY MODIFICATIONS TO VESSEL.			

UNIVERSITY OF WASHINGTON  
SEATTLE, WASHINGTON

R/V THOMAS G. THOMPSON  
GENERAL ARRANGEMENT  
DOUBLE BOTTOM & HOLD PLAN

**THE GLOSTEN ASSOCIATES, Inc.**  
CONSULTING ENGINEERS SERVING THE MARINE COMMUNITY  
600 Mutual Life Building • 605 First Avenue • Seattle, Washington 98104-2224

AutoCAD File Name 71103-1.DWG	Drawn by BK	Date 02/02	Checked by WNA	Date 2000/2/2	Approved by WNA	Date 2000/2/2
Plotting Scale 1=96	Scale 1/8" = 1'-0"	Drawing No. 9171-103	Sheet 1 of 4	Rev --		



DRAWING NUMBER

PLAN HOLD CORPORATION • IRVINE, CALIFORNIA  
REORDER BY NUMBER 0734R

DRAWING NUMBER

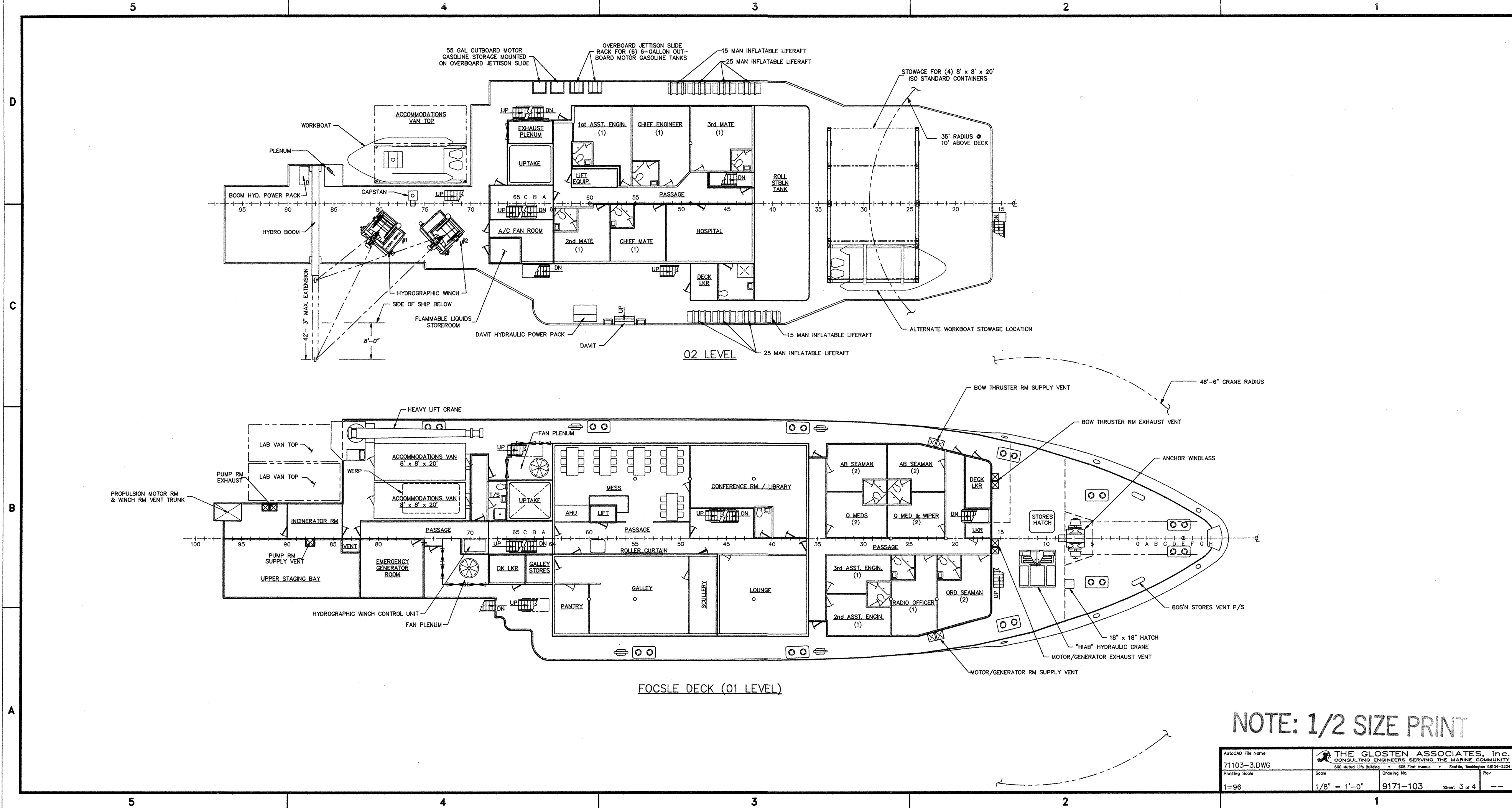
PLAN HOLD CORPORATION • IRVINE, CALIFORNIA  
REORDER BY NUMBER 0734R

9171-103 Sht 3

R/V Thomas G. Thompson  
University of Washington

DRAWING NUMBER

PLAN HOLD CORPORATION • IRVINE, CALIFORNIA  
REORDER BY NUMBER 0734R



NOTE: 1/2 SIZE PRINT

AutoCAD File Name 71103-3.DWG	THE GLOSTEN ASSOCIATES, Inc. CONSULTING ENGINEERS SERVING THE MARINE COMMUNITY 600 Mutual Life Building • 605 First Avenue • Seattle, Washington 98104-2224		
Plotting Scale 1=96	Scale 1/8" = 1'-0"	Drawing No. 9171-103	Rev Sheet 3 of 4



DRAWING NUMBER

DRAWING NUMBER

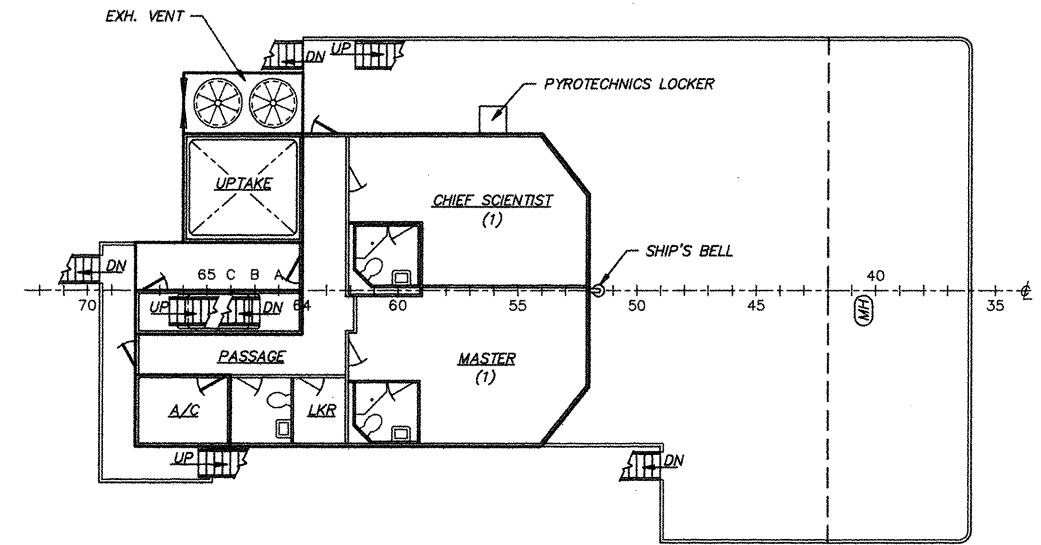
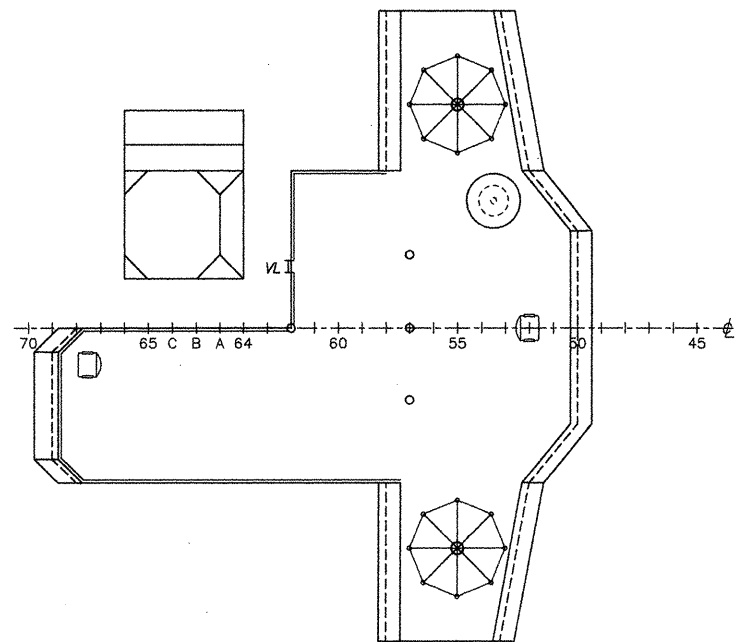
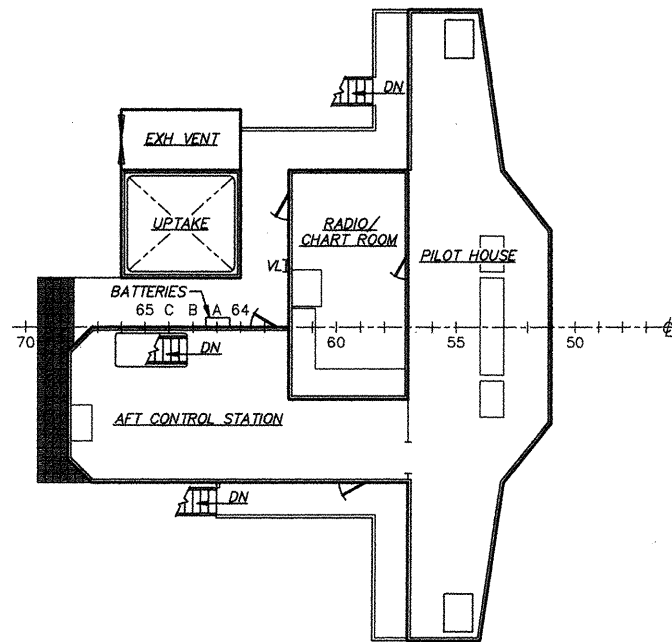
9171-103 Sht 4

DRAWING NUMBER

PLAN HOLD CORPORATION • IRVINE, CALIFORNIA  
REGISTERED PROFESSIONAL ARCHITECT  
REGISTERED PROFESSIONAL ENGINEER  
REGISTERED PROFESSIONAL MECHANICAL ENGINEER  
REGISTERED PROFESSIONAL ELECTRICAL ENGINEER  
REGISTERED PROFESSIONAL CIVIL ENGINEER  
REGISTERED PROFESSIONAL LAND SURVEYOR  
REGISTERED PROFESSIONAL GEODETIC SURVEYOR  
REGISTERED PROFESSIONAL ENVIRONMENTAL ENGINEER  
REGISTERED PROFESSIONAL CHEMICAL ENGINEER  
REGISTERED PROFESSIONAL METALLURGICAL ENGINEER  
REGISTERED PROFESSIONAL INDUSTRIAL ENGINEER  
REGISTERED PROFESSIONAL AERONAUTICAL ENGINEER  
REGISTERED PROFESSIONAL NUCLEAR ENGINEER  
REGISTERED PROFESSIONAL AGRICULTURAL ENGINEER  
REGISTERED PROFESSIONAL MARINE ENGINEER  
REGISTERED PROFESSIONAL MARINE ELECTRICIAN  
REGISTERED PROFESSIONAL MARINE MECHANIC  
REGISTERED PROFESSIONAL MARINE PAINTER  
REGISTERED PROFESSIONAL MARINE RIGGING  
REGISTERED PROFESSIONAL MARINE WELDING  
REGISTERED PROFESSIONAL MARINE YACHT DESIGNER  
REGISTERED PROFESSIONAL MARINE YACHT REPAIRER  
REGISTERED PROFESSIONAL MARINE YACHT RESTORER  
REGISTERED PROFESSIONAL MARINE YACHT TRIMMER  
REGISTERED PROFESSIONAL MARINE YACHT VARNISHER  
REGISTERED PROFESSIONAL MARINE YACHT WOODWORKER  
REGISTERED PROFESSIONAL MARINE YACHT WINDOW INSTALLER  
REGISTERED PROFESSIONAL MARINE YACHT WINDOW TRIMMER  
REGISTERED PROFESSIONAL MARINE YACHT WINDOW WASHING  
REGISTERED PROFESSIONAL MARINE YACHT WINDOW WAXING  
REGISTERED PROFESSIONAL MARINE YACHT WINDOW POLISHING  
REGISTERED PROFESSIONAL MARINE YACHT WINDOW GLAZING  
REGISTERED PROFESSIONAL MARINE YACHT WINDOW LEADERSHIP  
REGISTERED PROFESSIONAL MARINE YACHT WINDOW MAINTENANCE  
REGISTERED PROFESSIONAL MARINE YACHT WINDOW REPAIR  
REGISTERED PROFESSIONAL MARINE YACHT WINDOW REPLACEMENT  
REGISTERED PROFESSIONAL MARINE YACHT WINDOW SEALS  
REGISTERED PROFESSIONAL MARINE YACHT WINDOW TREATMENT  
REGISTERED PROFESSIONAL MARINE YACHT WINDOW UPGRADE  
REGISTERED PROFESSIONAL MARINE YACHT WINDOW VENTILATION  
REGISTERED PROFESSIONAL MARINE YACHT WINDOW WEAR  
REGISTERED PROFESSIONAL MARINE YACHT WINDOW WINDSTOPPING  
REGISTERED PROFESSIONAL MARINE YACHT WINDOW WOODWORKING  
REGISTERED PROFESSIONAL MARINE YACHT WINDOW ZEPHYRUS

D  
C  
B  
A

5 4 3 2 1



NOTE: 1/2 SIZE PRINT

AutoCAD File Name 71103-4.DWG	Scale 1/8" = 1'-0"	THE GLOSTEN ASSOCIATES, inc. CONSULTING ENGINEERS SERVING THE MARINE COMMUNITY 605 Mutual Life Building • 605 First Avenue • Seattle, Washington 98104-2224	Drawing No. 9171-103	Rev ---
Plotting Scale 1=96			Sheet 4 of 4	