

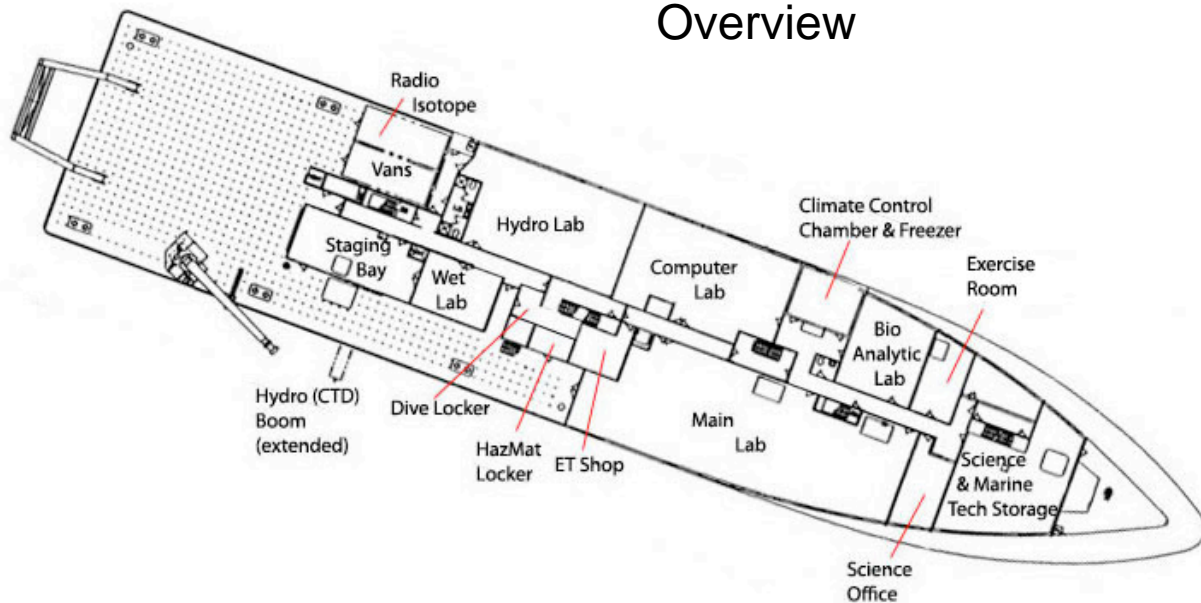
R/V THOMPSON

THOMAS G. THOMPSON IS AN AGOR-23. AGOR IS A US NAVY DESIGNATOR FOR AN OCEANOGRAPHIC RESEARCH SHIP.

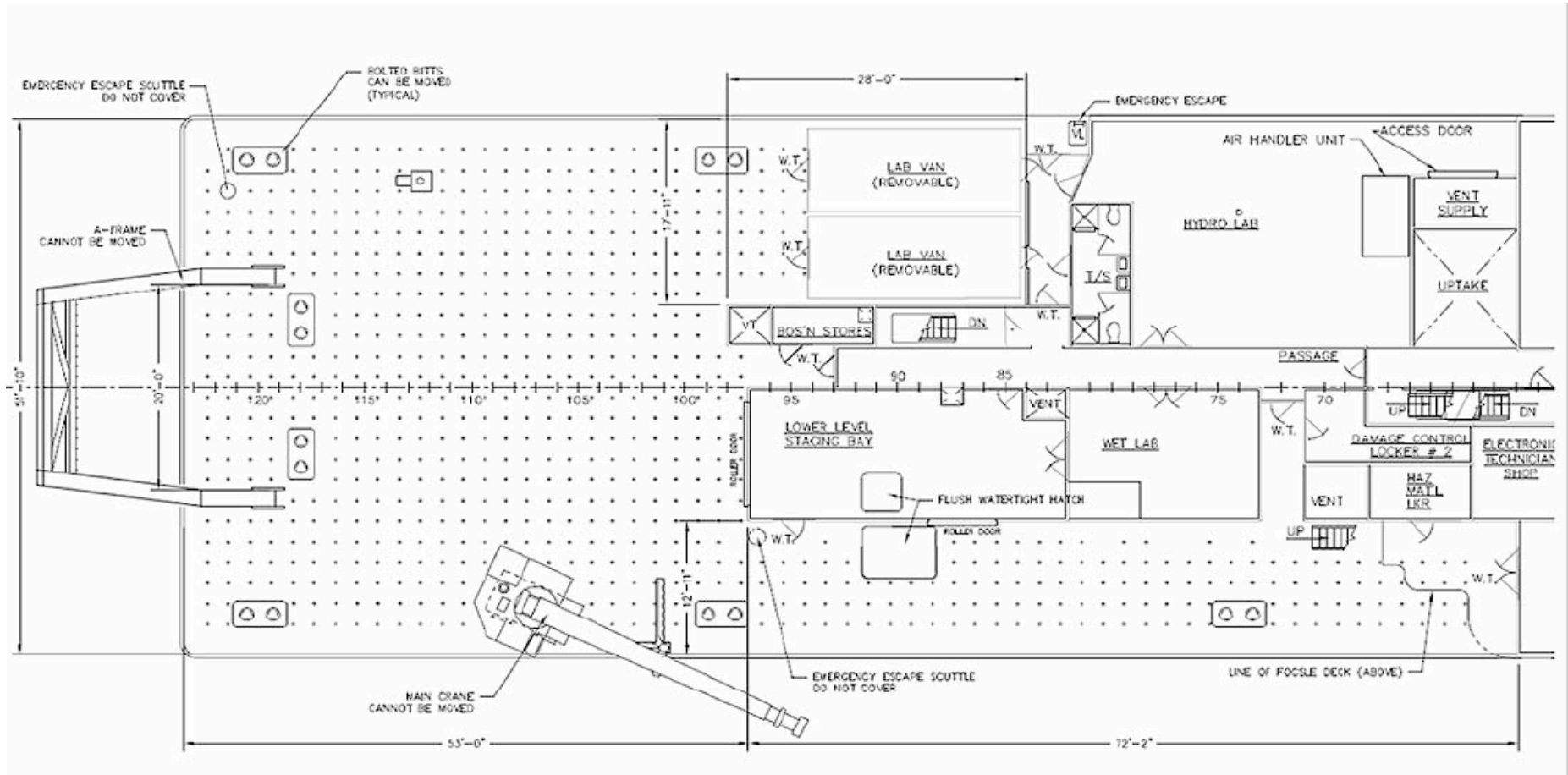


The R/V Thomas G. Thompson is owned by the Office of Naval Research and operated under a Charter Party agreement by the School of Oceanography at the University of Washington as part of the UNOLS fleet. The Thompson is 274 ft in length, 52.5 ft. beam, and at full load has a 19 foot draft. The normal cruising speed is 11 knots, and offers a ships complement for 21 officers and crew, 2 marine technicians and berthing for up to 36 scientists.

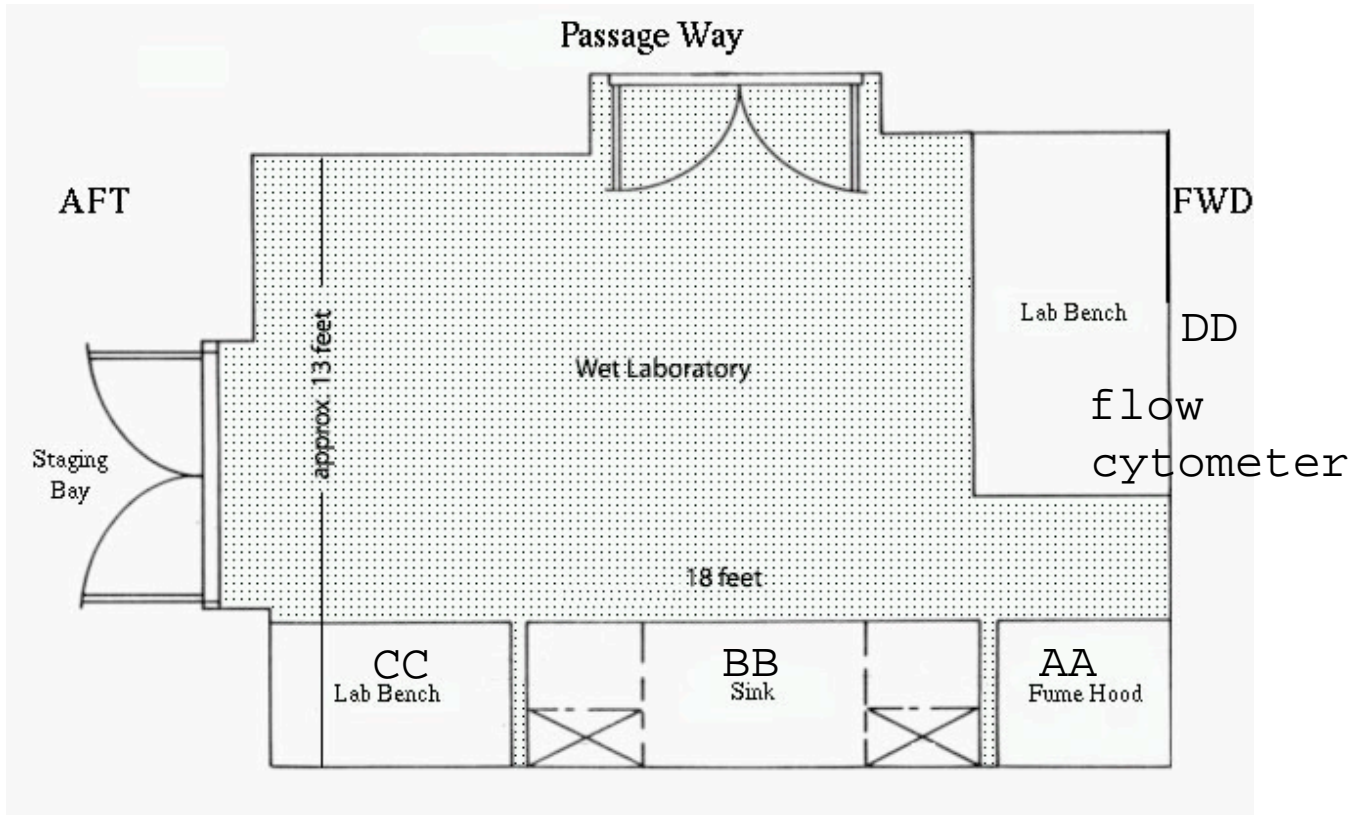
Overview



Main Deck Aft



Wet Lab



Information as of Oct 2013, labs are flexible and have likely changed, please check with the ship for any updates and detailed planning.

Wet Lab (starboard side aft): (no floor bolts, unistrut on bulkheads)

Bench:	wide	deep	high	Overhead Clearance	UnderBench Spaces
AA (forward)	26"	24"	22"	0"	hood

BB (sink) 93" 24" 34" 44" forward section is open space unit 23" wide x 33" high, then sink section with freshwater and uncontaminated seawater supply that can drain overboard 35" wide x 12" high floor to drain pipe, then aft shelving unit 23" wide x 17" high floor to shelf and 14" high shelf to counter; then cupboard full of safety gear.

CC (safety gear in cupboard and shelves above) counter top is about 48" x 24", no storage available below

DD (forward)	37"	26"	78"	12"	flow cytometer installation
---------------------	-----	-----	-----	-----	-----------------------------

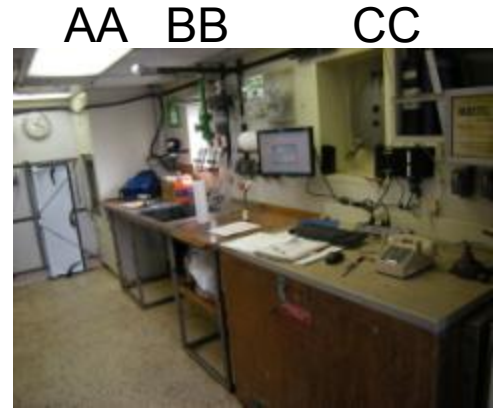
Wet Lab



AA



BB



CC

AA BB

CC



DD

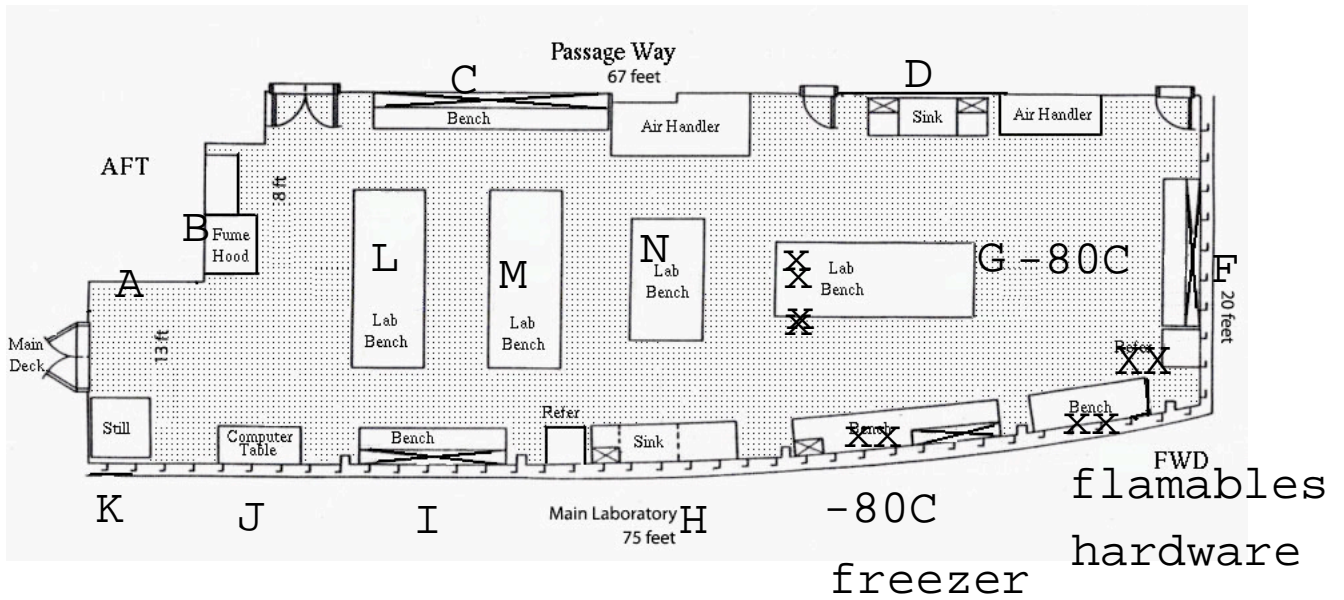


DD



Aft inside corner and doors to staging bay and passage way

Main Lab



Information as of Oct 2013, labs are flexible and have likely changed, please check with the ship for any updates and detailed planning.

Main Lab: (floor bolts on a 2' x 2' grid; unistrut along bulkheads)

Bench:	wide	deep	high	Overhead Clearance	UnderBench Spaces
A (aft)	90"	14.5"		41.5"	1 only @ 90" long x 35" high
B (Hood)	35"	23"	28"	0 "	cupboard
C (inboard)	90"	29"	*	43" (* = 18" to shelves and cupboard);	2 benches side by side UnderBench is divided into aft shelving lower @ 23" wide x 18" above floor, and Upper @ 23" wide x 15" above lower shelf; then Open gap @ 41" wide x 35" high; then Open area @ 23" wide x 34" high (2 each); then Open gap @ 41" wide x 35" high; then at forward end of this Open gap @ 23" wide x 34" high
All shelving/cupboard units above benches are 12" deep and 22" or 46" wide					
D (inboard)	93"	25"		41"	consisting of 33" segment aft of sink with 23" wide x 17" high space floor to shelf and 14" high space shelf to counter; then 25" wide sink with fresh and uncontaminated seawater supply and 12" clearance between floor and drain pipe; then 34" segment forward of sink with 23" wide x 23" high space floor to shelf and 9" high space shelf to counter
E (forward)	93"	26"	37"	42"	inboard section consisting of Inboard shelving unit 23" wide x 10" space floor to shelf and 20" space shelf to counter; then a gap 37" wide x 36" high; then more shelving 23" wide x 17" floor to shelf and 14" shelf to counter
E (forward)	28"	26"	37"	42"	outboard section consisting of Shelving unit 23" wide x 23" floor to shelf and 8" shelf to counter

Main Lab, continued

F (flammables cabinet and unistrut/hardware cabinets) with -80C freezer space aft of hardware cabinet

G (2 each household refrigerator/freezers and 1 each -80C (12 cubic feet) freezer space)

H (outboard) 93" 28" 37" 42-43.5" consisting of
Forward space unit 23" wide x 33" high, then 24" wide sink with deionizing column and overboard seawater drain and 8" clearance under drain pipe, then aft shelving unit 23" wide with 23" space floor to shelf and 9" space shelf to counter, then refrigerator space; the countertop has a 33" working space forward of sink, a 24" wide x 12" deep sink, and a 33" working space aft of the sink

I (outboard) 93" 28" 37" 43.5" consisting of
Forward space unit 23" wide x 33" high, a gap 38" wide x 36" high, and an aft space unit 23" wide x 33" high

J (outboard) 71" 28" 28" 51" computer table open underneath

K (freshwater still to feed deionizing unit in this lab)

L (center aft) 112" 60" 40" 40-41" 4 each spaces 22" wide x 38" high

M (center) 112" 60" 40" 40-41" 2 each shelving units on the ends 22" wide x 17" space floor to shelf and 18" space shelf to counter, and a gap in the middle 46" wide x 37" high

N (center) 93" 57" 29" 51" Ping pong table base; 3 sections underneath @ 22" wide x 27" high

O (center) 93" 60" 39" 42" near refrigerators; underneath are shelves fore and aft @ 22" wide x 17" floor to shelf and 19" shelf to countertop; in between the gap is 22" wide x 38" high

Main Lab Benches Thompson



A



B



C



D



E



F

Main Lab Thompson



G



H



I



J



K



L



M



N



O



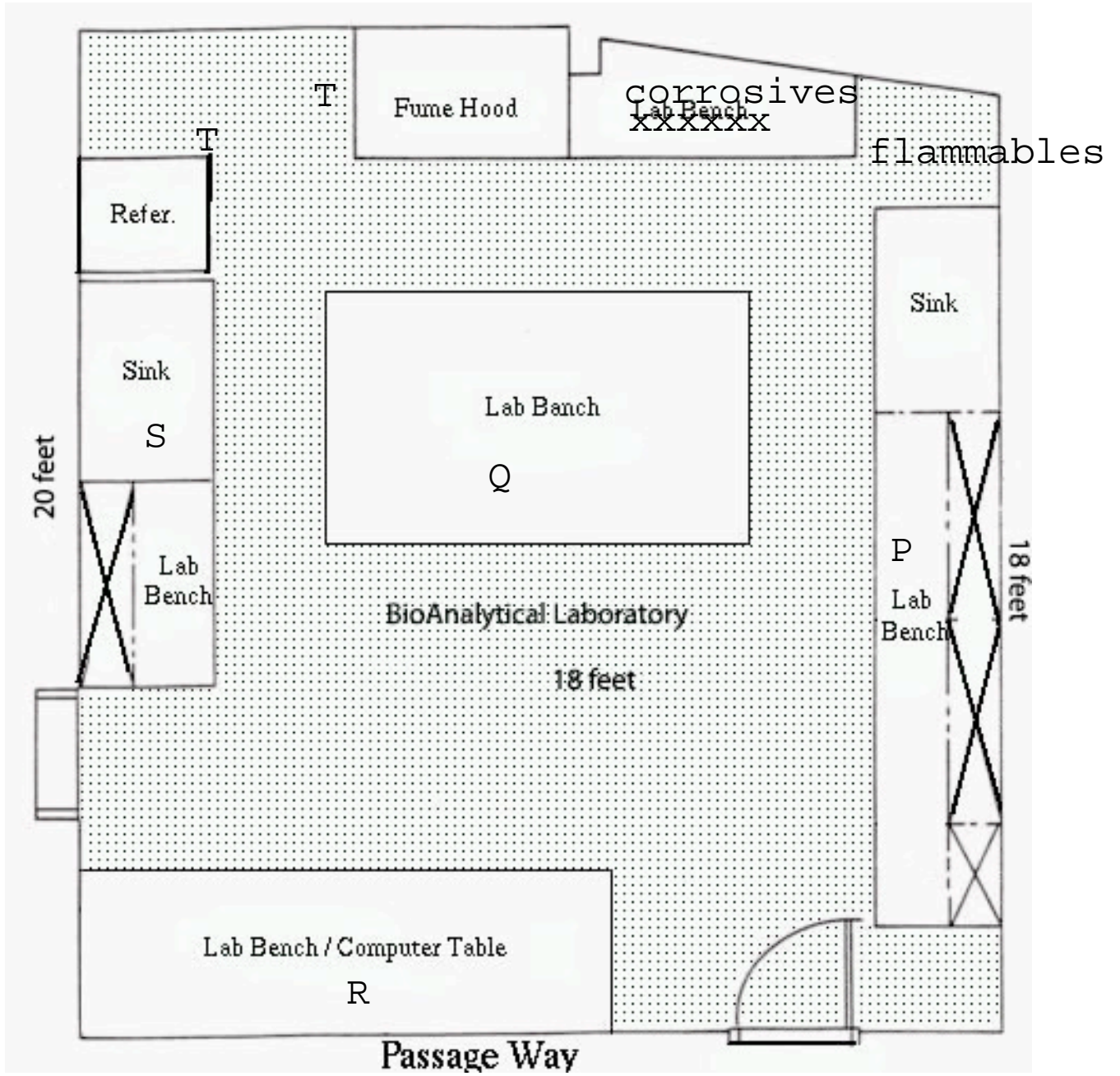
O

(from passage door)



N

Bio Analytical Lab



Information as of Oct 2013, labs are flexible and have likely changed, please check with the ship for any updates and detailed planning.

Bioanalytical Lab (port side forward): (floor bolts on a 2' x 2' grid; unistrut on bulkheads)

Bench:	wide	deep	high	Overhead Clearance	UnderBench Spaces
P (forward sink)	49"	28"	37"	43"	sink is 23 long x 15" wide x 9" deep with 16" clearance under drain pipe
P (forward)	75"	24"	37"	43"	2 each space units 22" wide x 33" high at ends, with a 28" wide x 36" high space in between
Q (center)	93"	61"	39"	39"	3 each spaces 22.5" wide x 37.5" high
R (inner)	118"	28"	30"	48"	space 70" wide x 28" high forward and a space 44" wide x 28.5 aft
S (aft)	45"	26"	37"	43"	2 each @ 22" wide x 33" high
S (aft sink)	49"	28"	37"	43"	sink is 23 long x 15" wide x 9" deep with 16" clearance under drain pipe
T (hood)	36	22	25	0"	cupboard underneath, refrigerator in corner, corrosives cabinet forward of hood, flammables cabinet forward of hood also

T (refrigerator/freezer) refrigerator compartment is 24" wide x 20" high x 16" deep and freezer compartment is 24" wide x 12" high x 16" deep

BioAnalytical Lab Thompson



P



P



Q



R

S



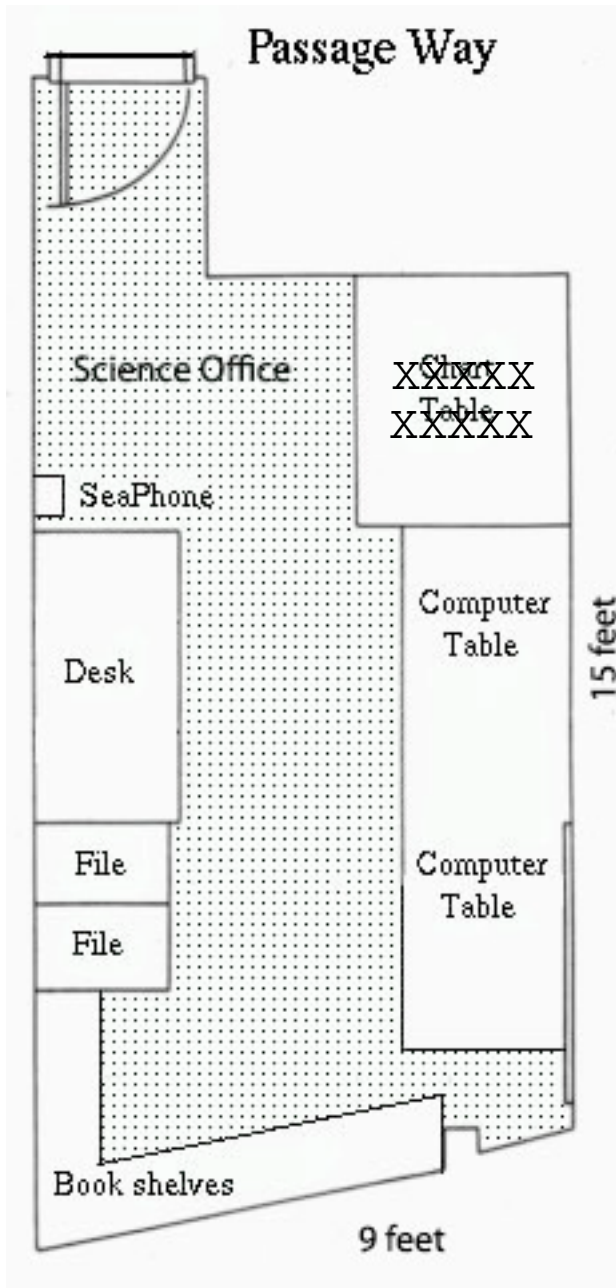
S

T



Q

Science Office



Science Office: (no floor bolts, no unistrut)

There are public computers and printers and a desk in this space, which can be moved a bit to make space for microscopes or other science equipment.

Science Office Thompson



Printers and public computers



Desk

Computer Lab Thompson

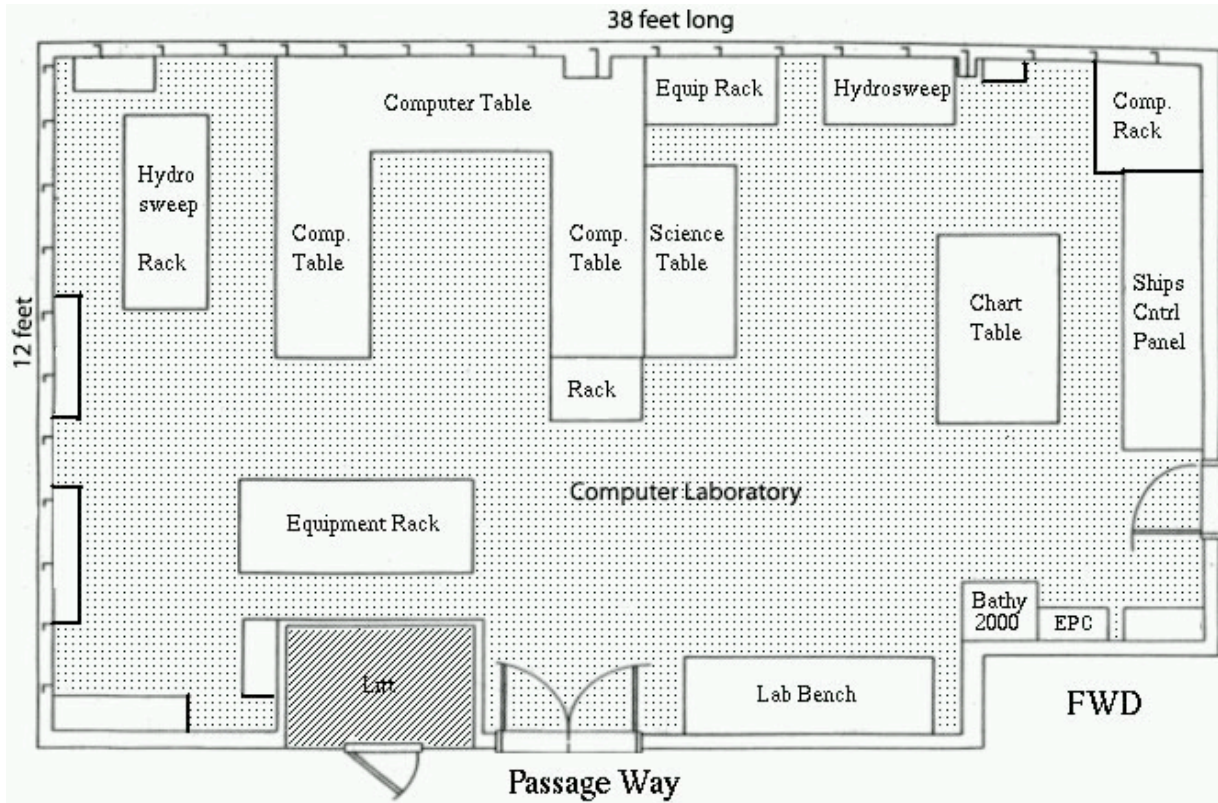


Science Table



Chart Table

Computer Lab

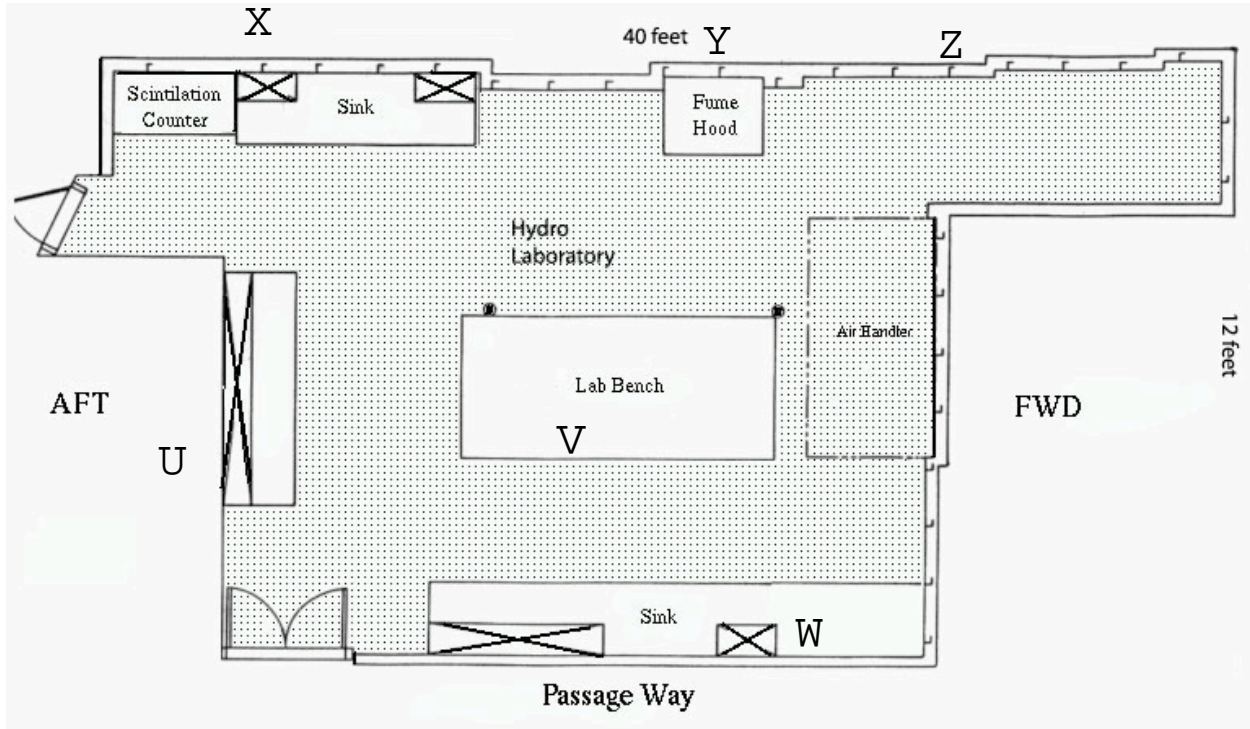


Information as of Oct 2013, labs are flexible and have likely changed, please check with the ship for any updates and detailed planning.

Computer Lab: (no floor bolts, some unistrut)

The Science table and Chart table in the forward part of the lab are available for the science party to place computers and cruise navigation planning gear near the 'control stations' for most of the shipboard science equipment. NO LIQUIDS in this lab.

Hydro Lab



Information as of Oct 2013, labs are flexible and have likely changed, please check with the ship for any updates and detailed planning.

Hydro Lab (port side aft): (no floor bolts, unistrut on bulkheads)

Bench:	wide	deep	high	Overhead Clearance	UnderBench Spaces
U (aft)	81"	28"	37"	43"	inboard shelving unit 23" wide x 17" high floor to shelf and 14" high shelf to counter; then open gap 13" wide x 36" high, then outboard shelving unit 23" wide x 11" high floor to shelf and 21" high shelf to counter
V (center)	117"	57"	37"	42"	3 shelving units; aft 28" wide x 11" high floor to shelf, then 10" high shelf to shelf, then 9" high shelf to counter; middle 28" wide x 17" high floor to shelf and 14" high shelf to counter; forward 28" wide x 17" high floor to shelf and 14" high shelf to counter
W (inboard)	132"	25"	38"	38-40"	forward
W (inboard)	75"	23"	38"	38-40"	aft
X (outboard)	50"	30"	35"	43"	aft section contains an open section 27" wide x 33" high and a shelving unit 18" wide x 14" floor to shelf and 16" shelf to counter
X (outboard)	91"	28"	35"	43"	forward section contains a shelving unit 23" wide x 10" high floor to shelf and 20" high shelf to counter, then a sink with seawater overboard drain 36" wide x 9" high floor to drain pipe, then a shelving unit 23" wide x 10" high floor to shelf and 20" high shelf to counter
Y (outboard)	55"	28"	28"	51"	formerly a hood area, now has plywood top over hood cabinets below
Z (outboard)	72"	20"		78"	open space on bulkhead near air handler

Hydro Lab Thompson



U



V



W



X



X



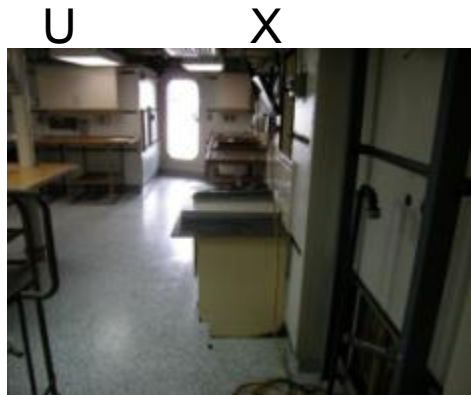
Y



Z



V



Y

W

U

U

X